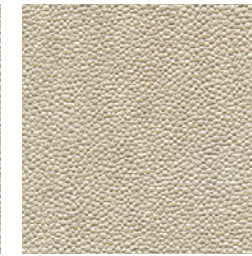




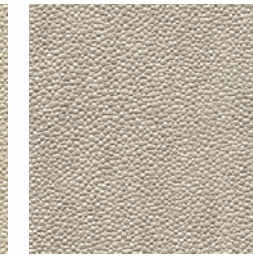
DN2-PLO-01 Hamoa



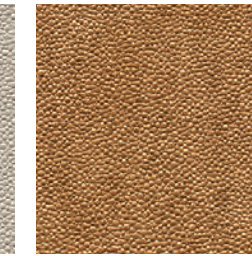
DN2-PLO-02 Hilo Bay



DN2-PLO-03 Gold Coast



DN2-PLO-04 Tatahi



DN2-PLO-05 Sunstone



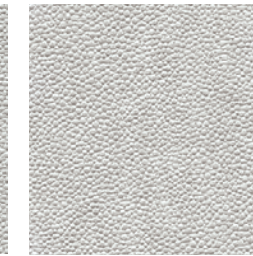
DN2-PLO-06 Lava Rock



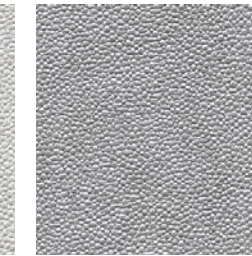
DN2-PLO-07 Coconut Island



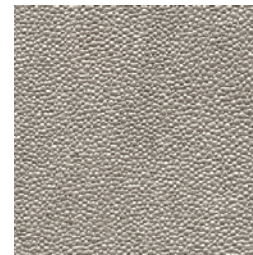
DN2-PLO-08 Sambac



DN2-PLO-09 Ludestone



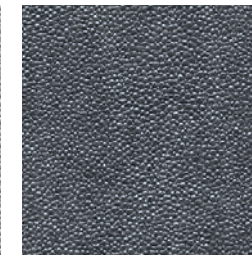
DN2-PLO-10 Nai'a



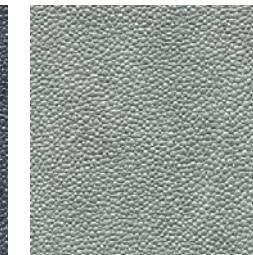
DN2-PLO-11 Cathedral Cove



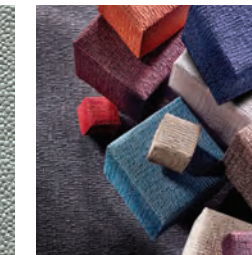
DN2-PLO-12 Lighthouse Reef



DN2-PLO-13 Stillwater



DN2-PLO-14 Portaria



FOR SIMILAR TEXTURES
CLICK HERE

Type II 20 oz | Width: 54" | Backing: Osnaburg | Match: Random Match Reversible Pattern
Repeat 54"H x 24"V | Fire Rating: Class A | Flame Spread: 20 | Smoke Development: 45