



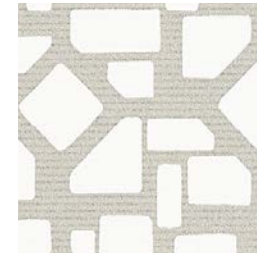
de
nōvō[®] WALL

BLOCK 35™



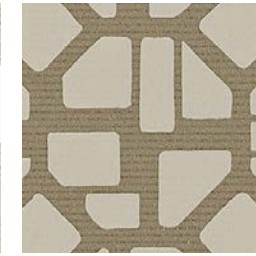
DN2-OCK-01

Elfreth



DN2-OCK-02

Crown Glass



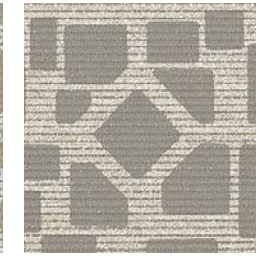
DN2-OCK-03

Rue de Barres



DN2-OCK-04

Cobblestone



DN2-OCK-05

Kaleidoscope



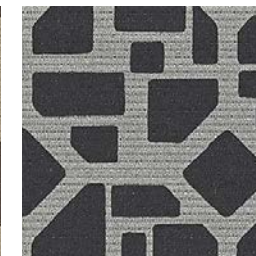
DN2-OCK-06

Red Rock



DN2-OCK-07

Acorn Street



DN2-OCK-08

Negative Space



DN2-OCK-09

Hopscotch



DN2-OCK-10

Post Alley



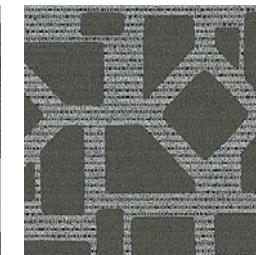
DN2-OCK-11

Bardstown



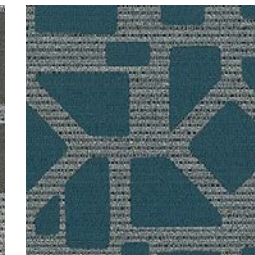
DN2-OCK-12

Belgian Block



DN2-OCK-13

Laclede Landing



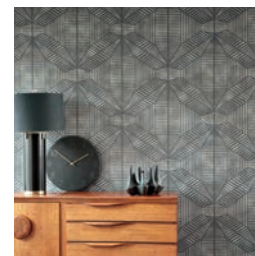
DN2-OCK-14

Wharf



DN2-OCK-15

South Bend



FOR SIMILAR TEXTURES
CLICK HERE

Type II 20 oz | Width: 52"/54" | Backing: Non-Woven | Match: Non-Reversible Straight Across Match
Repeat 54"H x 21"V | Fire Rating: Class A | Flame Spread: 15 | Smoke Development: 15

A Colour & Design Inc. Company
Copyright 2018. All Rights Reserved.
Any copying or other use is expressly prohibited.
Made in the U.S.A.

