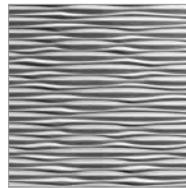


# The Formula for Success Begins Here

strikingly beautiful,  
deeply textured  
+ durable

These three ingredients are the foundation of every ATI MirroFlex Ceiling Tile. Combine these patterns with a broad spectrum of colors and patinas to create a custom look for modern or traditional spaces.



— Represents a 2' x 2' section

Sahara — Pattern Name

G<sup>2</sup> G<sup>4</sup> L<sup>2</sup> L<sup>4</sup> T A — Type Indicators



2' x 2'  
Glue-Up  
Ceiling  
Tiles



2' x 4'  
Glue-Up  
Ceiling  
Tiles



2' x 2'  
Lay-In  
Ceiling  
Tiles  
NonTegular



2' x 4'  
Lay-In  
Ceiling  
Tiles  
NonTegular

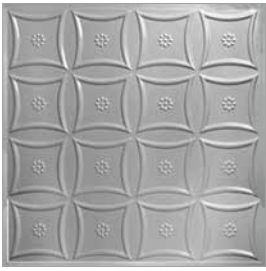


2' x 2'  
Tegular  
Lay-In  
Ceiling  
Tiles



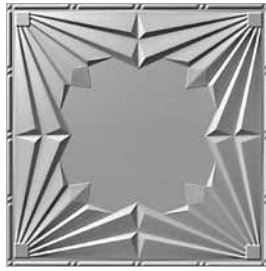
Available in  
Acoustic/  
Perforated

See Quick Reference Guide for note on 2' x 2' and 2' x 4' Lay-Ins that have minimums/multiples when ordering.



Americana

G<sup>2</sup> T A



Art Deco

G<sup>4</sup> L<sup>2</sup> L<sup>4</sup> A



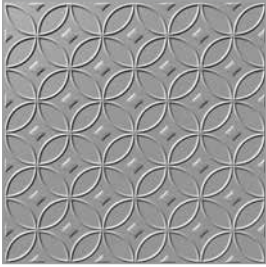
Baltimore

G<sup>2</sup> G<sup>4</sup> L<sup>2</sup> L<sup>4</sup> A



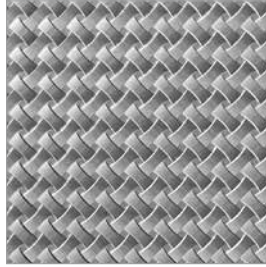
Boston

G<sup>2</sup> G<sup>4</sup> L<sup>2</sup> L<sup>4</sup> A



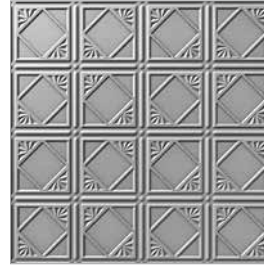
Celestial

G<sup>2</sup> T A



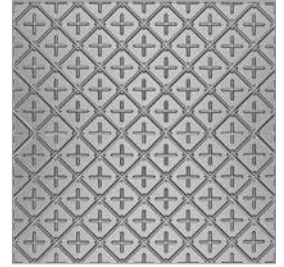
Celtic Weave

G<sup>2</sup> T A



Charleston

G<sup>4</sup> L<sup>2</sup> L<sup>4</sup> A



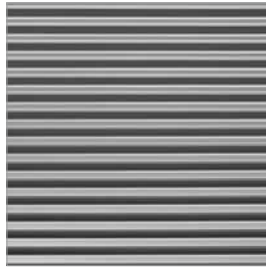
Chesapeake

G<sup>2</sup> T A



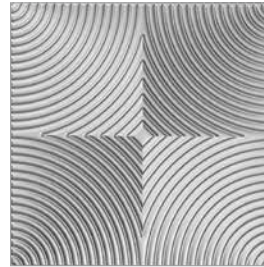
Colonial

G<sup>2</sup> T A



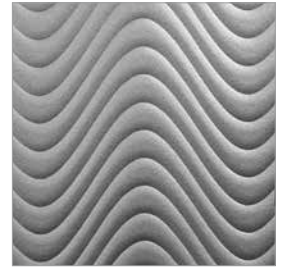
Corrugated

T A



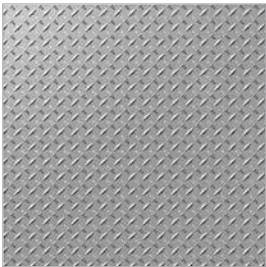
Curvation

G<sup>2</sup> T A



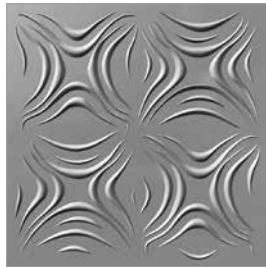
Curves

L<sup>2</sup> A



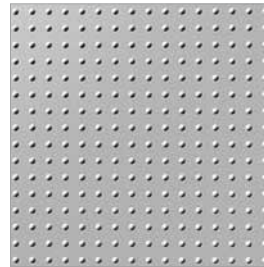
Diamond Plate

G<sup>4</sup> L<sup>4</sup> T A



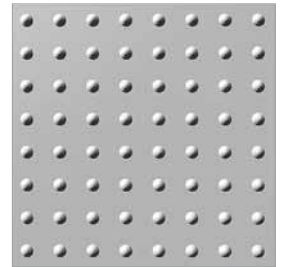
Dogwood

G<sup>2</sup> G<sup>4</sup> T A



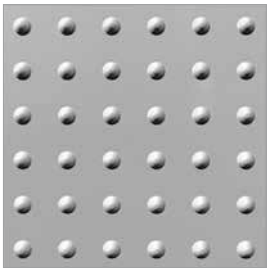
Dome 1

L<sup>2</sup> A



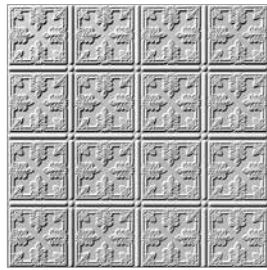
Dome 2

L<sup>2</sup> A



Dome 3

L<sup>2</sup> A



Fleur

G<sup>4</sup> L<sup>2</sup> L<sup>4</sup> A



Georgian

G<sup>2</sup> T A



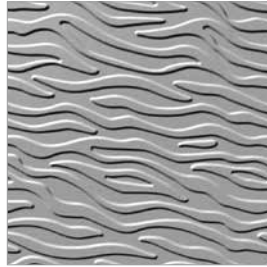
Hurricane

G<sup>2</sup> T A



Inset Coffered

T A



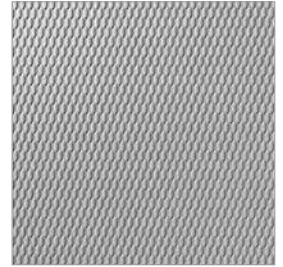
Kelp

G<sup>2</sup> T A



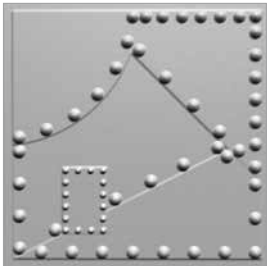
Madison

G<sup>4</sup> L<sup>2</sup> L<sup>4</sup> A



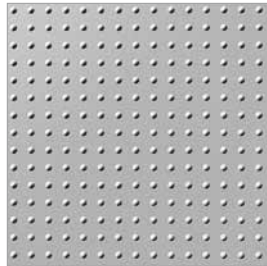
Marquis

L<sup>2</sup> A



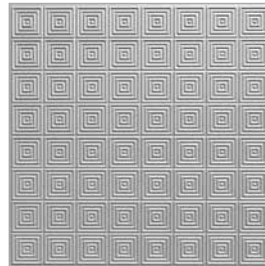
Metal Plates

T A



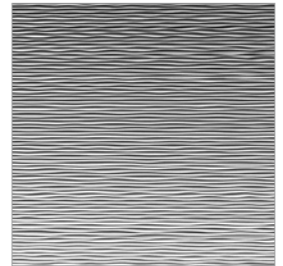
Mini Dome

L<sup>2</sup> A



Mini Quadro

L<sup>2</sup> A



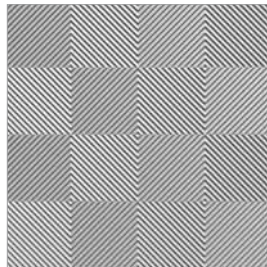
Mojave

G<sup>2</sup> T A



Portrait

G<sup>4</sup> L<sup>2</sup> L<sup>4</sup> A



Quadro

L<sup>2</sup> A



Quilted

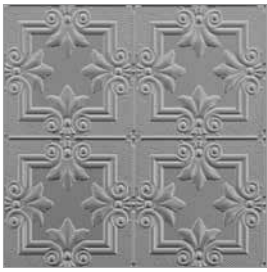
L<sup>2</sup> A



Raised Panel Coffered

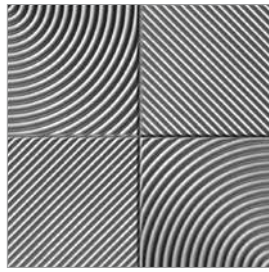
T A





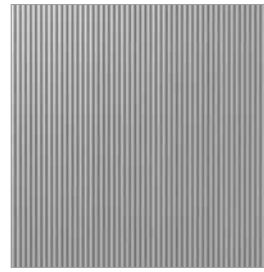
Regalia

G<sup>2</sup> L<sup>2</sup> L<sup>4</sup> A



Revolution

G<sup>2</sup> T A



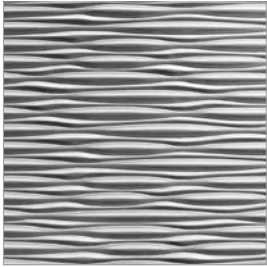
Rib 1

T A



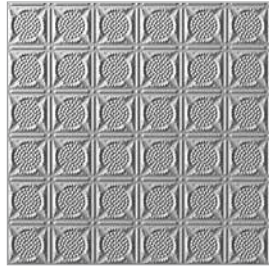
Rosette

G<sup>4</sup> L<sup>2</sup> L<sup>4</sup> A



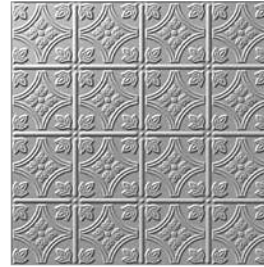
Sahara

G<sup>2</sup> T A



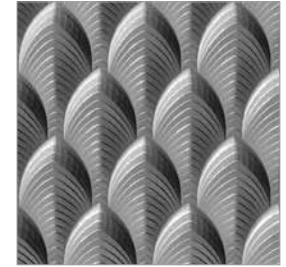
San Diego

G<sup>4</sup> L<sup>2</sup> L<sup>4</sup> A



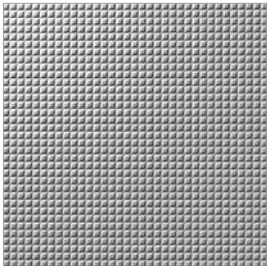
Savannah

G<sup>2</sup> G<sup>4</sup> L<sup>2</sup> L<sup>4</sup> A



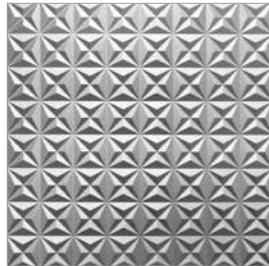
South Beach

G<sup>2</sup> T A



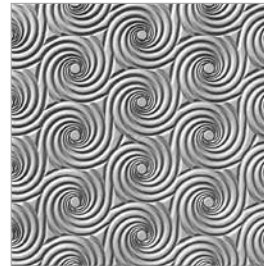
Square 5

L<sup>2</sup> A



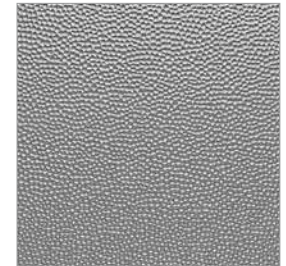
Star

G<sup>2</sup> T A



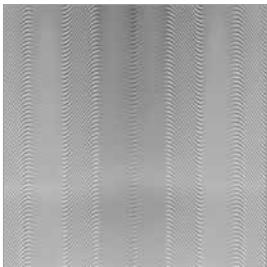
Storm

G<sup>2</sup> T A



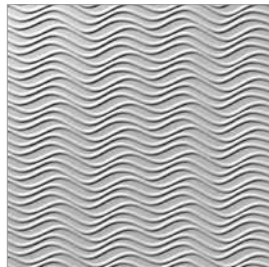
Strike

G<sup>2</sup> G<sup>4</sup> L<sup>2</sup> L<sup>4</sup> A



Tidal

G<sup>2</sup> T A



Wavation

G<sup>2</sup> L<sup>4</sup> T A



2' x 2'  
Glue-Up  
Ceiling  
Tiles



2' x 4'  
Glue-Up  
Ceiling  
Tiles



2' x 2'  
Lay-In  
Ceiling  
Tiles  
NonTegular



2' x 4'  
Lay-In  
Ceiling  
Tiles  
NonTegular



2' x 2'  
Tegular  
Lay-In  
Ceiling  
Tiles



Available in  
Acoustic/  
Perforated

See Quick Reference Guide for note on 2' x 2' and 2' x 4' Lay-Ins that have minimums/multiples when ordering.