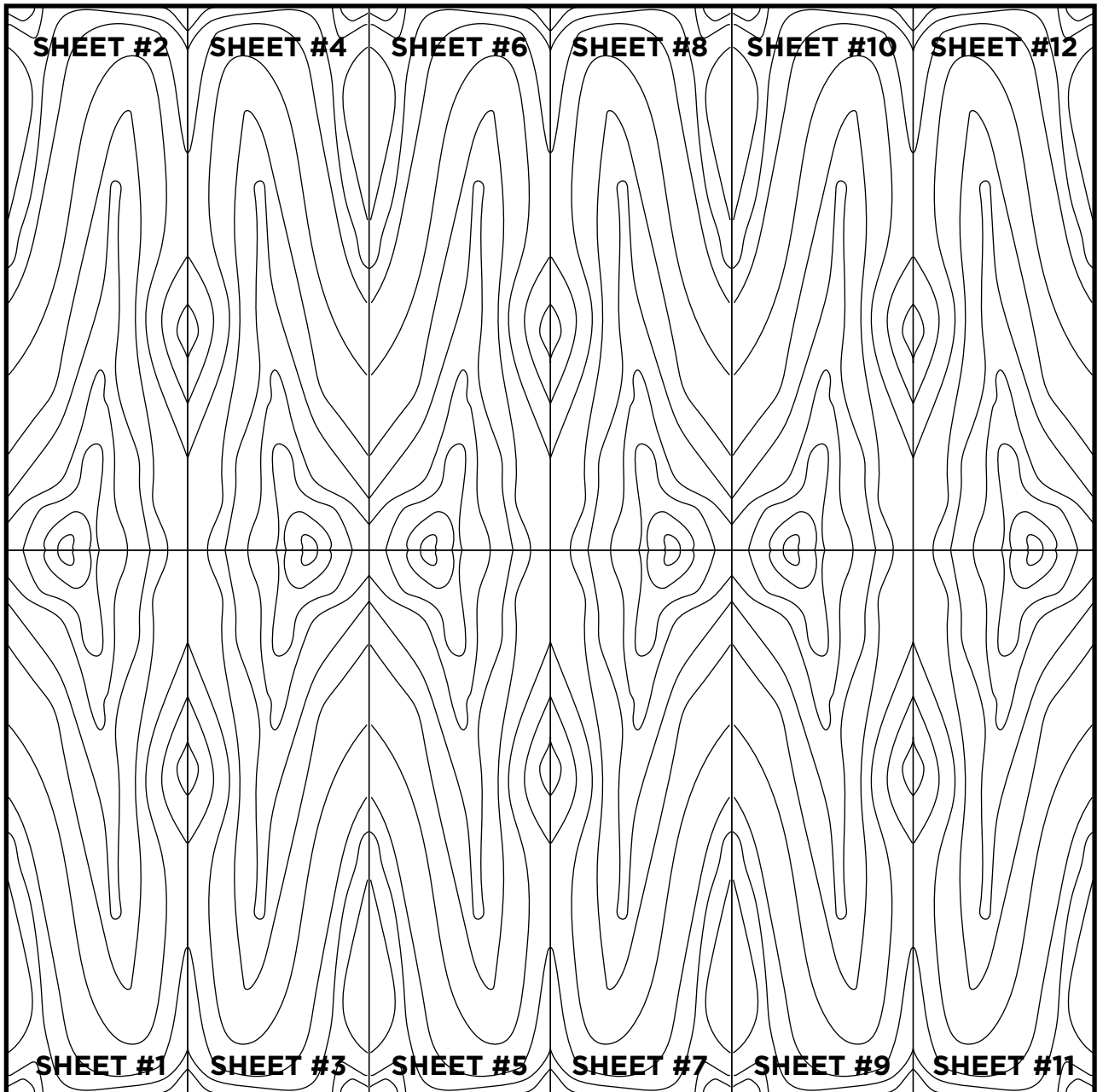


END MATCHING

(SHEET INSTALLATION)



End matching is used to extend the apparent length of available veneer for high wall panels. Sheets are produced book as per drawing. The top sheet are flipped to match the grain (not perfectly) from the previous sheet This is true in either vertical or horizontal installation.

*When end matching or stacking greater than two sheets in length, this should be clearly defined on order.