



FUSION

Durable Surfaces Fused with
Custom or Stock Artwork

Commercial
Healthcare + Institutional
Hospitality
Retail



Design Beyond the Surface

ATI Decorative Laminates is a leading manufacturer of decorative surfacing solutions. Headquartered in Greensboro, NC since 1979, ATI provides solutions for the hospitality, healthcare and institutional, retail, commercial, and residential markets. Through our commitment to continuous improvement and our strong company values, our goal is to provide superior decorative products, quality customer service, and foster long-lasting relationships.

ATI products can be specified under the following CSI divisions:

- 068300 – Fusion FRP Sheets
- 074200 – Fusion Aluminum Sheets and Wood
- 095000 – Fusion Ceilings
- 097200 – Fusion Wall Panels
- 097800 – Fusion Aluminum Sheets
- 099600 – Fusion ArmorCoat™
- 101100 – Fusion Door and Display Inserts
- 101400 – Fusion Signage and Custom/Branded Art
- 102200 – Fusion Room Dividers and Modesty Panels
- 102600 – Fusion FRP Sheets and LuxCore™ Plus
- 102800 – Fusion Tub and Shower Doors
- 102600 – Fusion FRP Sheets and LuxCore™ Plus
- 121100 – Fusion Murals and Wall Art
- 121100 – Fusion Murals



ISO 9001: 2008 Certified | ISO 14001 Certified | HUB (Historically Underutilized Business) Certified

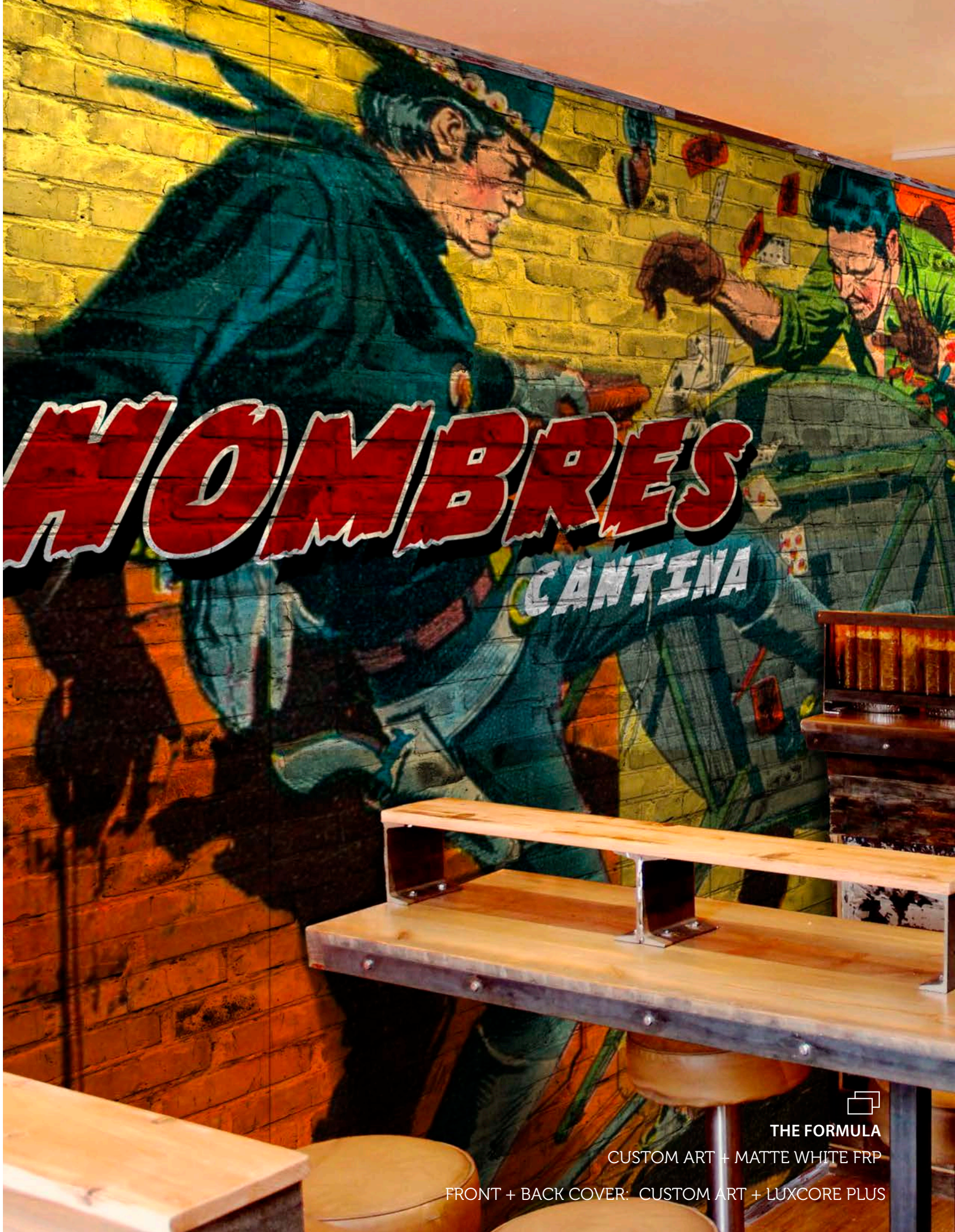


THE FORMULA
CUSTOM ART + GLOSS WHITE ALUMINUM

Contents



Design Beyond the Surface	
What is Fusion?	4
Why Choose Fusion?	6
Substrates & Solutions	
Substrates & Dual Technologies	10
Abrasion & Impact Resistance	14
Translucency	16
Signage & POP Applications	18
Artwork & Murals	20
Digital Printing on MirroFlex™	22
Artful Metals Collection	
Unbacked Specialty Metals	26
Designs	28
Case Studies	
Lake Orion Nursing Home & Rehab	30
Springfield Elementary School	32
Cincinnati Renaissance Hotel	34
Cresta Shopping Center	36
Idea Library	38
Accessories	46
Art Requirements, Terms, & FAQs	48
Quick Reference Guide	50
How to Order	51





THE FORMULA
CUSTOM ART + DIGITAL HIGH IMPACT STYRENE (HIPS)

Design Beyond the Surface



Dozens of Substrates



In-House Fusion
Design Team



Use Stock Images
or Custom Art



Custom Capabilities



Short Lead Times



Low Minimum
Order Quantities

What is Fusion?

Fusion allows for the combination of artwork with an array of substrates. Choose stock images from our Idea Library or supply your own custom art to be combined with a variety of substrates best suited for your project.

Fusion offers solutions for the commercial interior design industry and provides architectural elements for use in hospitality, healthcare and institutional, educational, and retail installations. With over a dozen substrate options, we can help create a custom surfacing solution for your application that can be used as decorative wall protection, large-scale murals, room dividers, custom millwork, or point-of-purchase displays.

Creative Services: Fulfilling Your Vision, One Pixel at a Time

ATI is a trusted advisor and offers a team of in-house designers to work with you from concept to completion.

One of the advantages of Fusion is the ability to use your own artwork. Simply upload your art for technical review and our Fusion specialists will guide you through the process. Need inspiration? Choose from our extensive Fusion Idea Library, where hundreds of images have been specifically developed to work with the Fusion process. In addition to our Idea Library, ATI has agreements with several top stock libraries to help connect you with an assortment of professional images that are licensable for use in your advertising or promotional materials.

From space branding to retail imaging and everything in between, ATI has the solution to help you achieve success. Your imagination is the limit!

Look for The Formula Artwork + Substrate = Fusion



Items Shown as Concept (If Applicable)

THE FORMULA

OVERSIZED GREEN LEAF + ACRYLIC

(Pictured Right)

Artwork

Substrate



Design Beyond the Surface

Features

Over a Dozen Substrate
Options Available 

Idea Library with
Hundreds of Stock Images 

Custom Capabilities 

Easy to Install 

Abrasion + Impact Resistant
Options Available 

Chemical Resistant 

Stain Resistant 

UV Resistant
(Digital Printing) 

Class A Fire Rated
Options Available 

ArmorCoat™ Added to
Some Fusion Substrates 

Why Choose Fusion? Solving Your Design Needs

1. Easy-to-Install Directly Over Most Surfaces

Fusion products are compatible with many different adhesives and installation methods, making them easy to incorporate into most designs.

2. High Impact, Abrasion, and Chemical Resistant Properties

Fusion offers a variety of substrate options that are perfect for high traffic areas and high wear applications. ATI can add scratch resistant coatings to many substrates.

3. Creative Services

ATI offers an array of creative services to allow for a "one-stop-shop" from concept to completion. Our in-house services include: art creation and modification, recommendation of the best production methods, specialized packaging and set-up instructions, as well as murals and large-scale art.

4. Over a Dozen Substrate Options

From woods to metals to FRP, we can help you select the right substrate for your project.

5. Hundreds of Stock Images

Our extensive Idea Library contains graphics and patterns ranging from organic to geometric and traditional to contemporary. Check out some of our stock images on pages 38-44. Be sure to visit ATILaminates.com/Idea-Library to view the entire ATI Idea Library.

6. Custom Capabilities

Our Fusion specialists will work alongside you to help create and achieve your vision.

7. Low Minimum Order Quantities

Whether you need one sheet for a finishing touch or 100 to complete your project, we have got you covered.

8. Short Lead Times

Fusion products are made to order. Standard lead times run approximately two weeks depending on the complexity of the project and order quantities.

9. Made in USA and in an ISO Certified Facility

Fusion products are made with pride in the USA. ATI is ISO Certified which enables us to have the "hands on" control necessary to maintain the high standards customers expect from us.



SUBSTRATES & SOLUTIONS

Over a Dozen Options
Durability
Translucency
Signage & POP Displays
Artwork & Murals

THE FORMULA
CUSTOM ART + DIGITAL HIGH IMPACT STYRENE (HIPS)

Substrates

Choose from Over a Dozen Adaptable, Durable Surfaces

With over a dozen substrate options, our creative team can design a custom solution for your application that can be used as wall art, decorative wall protection, large-scale murals, wall dividers, custom millwork, or point-of-purchase (POP) displays. Our substrates offer features like translucency, UV protection, easy installation, as well as impact, scratch, abrasion, and chemical resistant properties. Some of our substrates also feature a Class A Fire rating. We can help you find which one is best for our project to ensure it meets all your design needs.

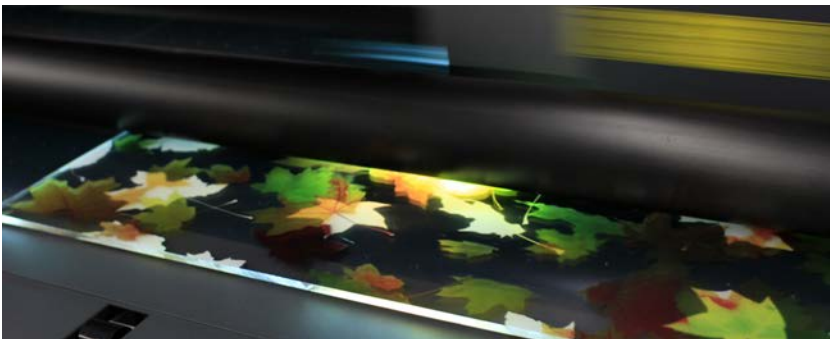
- Aluminum
- Clear
- FRP
- Wood
- Other

For a Quick Reference Guide of ATI's Fusion substrates and recommended applications, see page 50.

Dual Technologies

You can deliver an unforgettable and vibrant design using our Direct Digital Printing and Sublimation technologies. Both our Direct Digital Printing and Sublimation processes deliver impeccable results that attract attention. However, some solutions are better suited for digital printing processes, while others work best with sublimation.

What is the difference? Digital prints directly onto the surface so that the end result puts the image front-and-center, forming a thin layer on the surface that is cured in place with UV light. This ensures the ink flexes with the surface and will not crack, peel or delaminate, and offers exceptional UV resistance. Sublimation printing literally embeds the image into a surface, leaving the properties of the material visible.



Features

- Easy to Install
- Abrasion + Impact Resistant Options Available
- Chemical Resistant
- Stain Resistant
- UV Resistant (Digital Printing)
- Class A Fire Rated Options Available
- ArmorCoat™ Added to Some Fusion Substrates

Aluminum

Aluminum substrates are unbacked specialty metals which include **FusionSwirl** (hand swirled, 4' x 10' sheets), **Gloss and Matte White** (photorealistic quality, 4' x 8' sheets), **Mill Satin** (smooth, "raw" aluminum, 4' x 8' sheets), and the uniquely textured **Pebble** (4' x 8' sheets). **Aluminum Composite** (4' x 8' sheets) is also available. Most of these are abrasion and impact resistant and suitable for wall coverings, wainscoting, elevator walls, and bar fronts. Aluminum substrates are also good for signage and POP displays as well as artistic applications such as unique wall coverings, furniture, displays, murals, and retail backdrops.

Clear

Clear substrate options include **Acrylic** (.220" thickness in 4' x 8' sheets), **Clear PVC** (.060" thickness in 4' x 8' sheets) and **Polycarbonate** (.125" thickness in 4' x 8' sheets, Class A Fire rated). Some of these substrates often have the same reflective quality as glass and can be a beautiful, cost-effective alternative.

LuxCore™ Plus panels are also available in .045" thickness (Class A Fire rated, 4' x 8' sheets), .060" thickness (4' x 8' and 5' x 10' sheets), and .120" thickness (4' x 10' sheets). LuxCore Plus is a translucent FRP panel with visible glass strands that gives the product a slight frosted appearance. LuxCore Plus passes sanitary codes and is easy-to-clean, perfect for wet environments such as commercial kitchens and baths. With its second surface imaging and the addition of a white backer, LuxCore Plus resists scratching and is highly durable, making it perfect wall protection in high traffic areas and well suited for the healthcare industry.

FRP

FRP (Fiberglass Reinforced Plastic) panels are smooth and available in Gloss and Matte White options (4' x 8' sheets). They are abrasion and impact resistant and suitable for use as wall coverings, wainscoting, elevator walls, and bar fronts. FRP panels meet sanitary codes for washable, wipeable surfaces and are also good for signage and POP display.

Wood

Wood substrate options are available in Maple Veneer Plywood (3/4" thickness in 4' x 8' sheets) and Hardboard Gloss and Matte (.125" thickness in 4' x 8' sheets) and are suitable for artistic applications such as unique wall coverings, furniture, displays, murals, and retail backdrops.

Other

Digital High-Impact Styrene (.030" thickness in 4' x 8' sheets) is a white flat substrate that is lower cost and perfect for all art, mural, and signage requirements. ATI can also print onto standard **MirroFlex Door Skins, Flat Sheets, and MirroFlex Structures** patterns for additional textured options. Additional custom options are available that will suit most installations.

Substrates



MILL SATIN ALUMINUM

MATTE WHITE FRP

FUSION SWIRL

GLOSS WHITE ALUMINUM

MAPLE VENEER PLYWOOD

FUSION ALUMINUM

Aluminum Composite

FusionSwirl

Gloss / Matte White Aluminum

Mill Satin Aluminum

Pebble Aluminum

FUSION

Acrylic

Clear PVC

CLEAR

LuxCore Plus™
.045", .060", or .120"

Polycarbonate

FUSION FRP

Gloss White FRP

Matte White FRP

FUSION WOOD

Gloss / Matte Hardboard

Maple Veneer Plywood

OTHER

Digital High-Impact Styrene (HIPS)

Solutions

Abrasion & Impact Resistance: Beautiful Performance Surfaces for High Demand Areas

With Fusion, you can transform performance surfaces into brilliant designs that enhance the look of a space. Some of our Fusion substrates offer the perfect abrasion and impact resistant solutions for a variety of high-traffic environments, including:

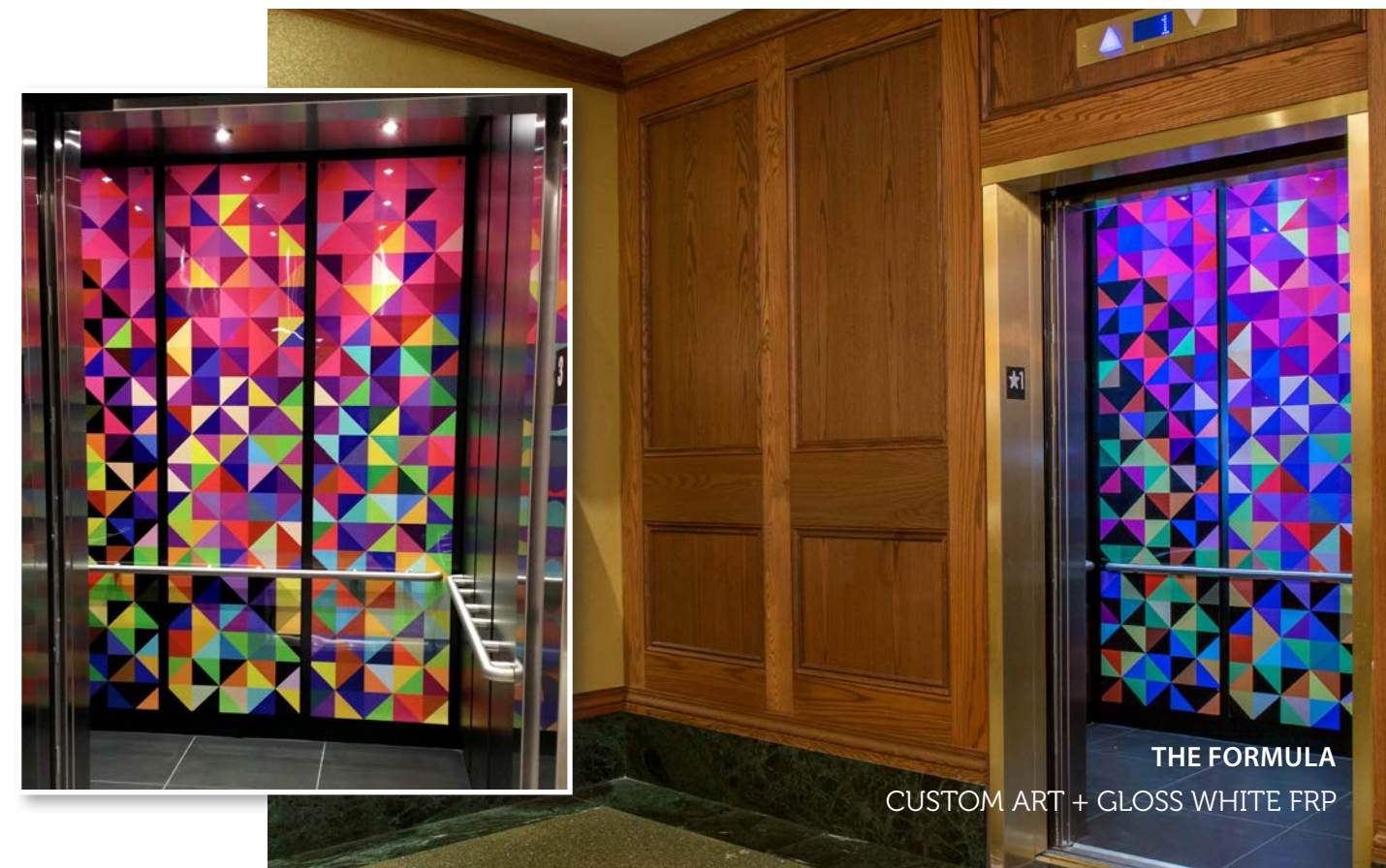
- Hospitals
- Restaurants and Bars
- Elevator Walls
- Retail

By combining either digital printing or sublimation on our durable surfaces, you can create a one-of-a-kind work of art that performs. Choose from:











- FRP (Available in Gloss or Matte White, 4' x 8' Sheets)
- LuxCore Plus .045" (Class A Fire Rated, 4' x 8' Sheets)
- LuxCore Plus .060" (4' x 8' and 5' x 10' Sheets)
- LuxCore Plus .120" (4' x 10' Sheets)

Both FRP and LuxCore Plus meet sanitary codes for easy-to-clean, washable, wipeable surfaces – perfect for the hospitality and healthcare environments.

ATI also offers ArmorCoat, a clear coating that protects digital printing on any substrate. ArmorCoat is available in clear gloss or matte.



Features

- Idea Library with Hundreds of Stock Images 
- Custom Capabilities 
- Easy to Install 
- Easy to Clean 
- Abrasion + Impact Resistant 
- Chemical Resistant 
- Stain Resistant 
- UV Resistant (Digital Printing) 
- Class A Fire Rated (LuxCore™ Plus) 
- ArmorCoat™ Available 

Solutions

Translucency: A Clear Choice for Letting Light Through

Art on our translucent substrates adds a touch of brilliance to areas where transparency or filtered light is desired, such as:

- Room Dividers
- Door and Retail Display Inserts
- Modesty Panels
- Transparent Advertising Items
- Other Indoor Applications

Some of these substrates often have the same reflective quality as glass and can be a beautiful, cost-effective alternative. Choose from:

- Acrylic (4' x 8' Sheets)
- Clear PVC (4' x 8' Sheets)
- LuxCore Plus .045" (Class A Fire Rated, 4' x 8' Sheets)
- LuxCore Plus .060" (4' x 8' and 5' x 10' Sheets)
- LuxCore Plus .120" (4' x 10' Sheets)
- Polycarbonate (Class A Fire Rated, 4' x 8' Sheets)

LuxCore Plus meets sanitary codes for easy-to-clean, washable, wipeable surfaces – perfect for the hospitality and healthcare environments.

Features

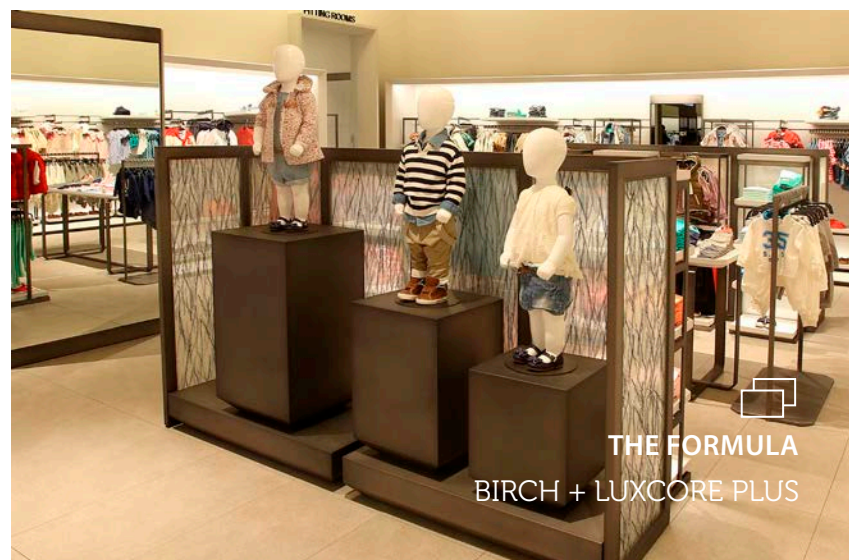
- Idea Library with Hundreds of Stock Images 
- Custom Capabilities 
- Easy to Install 
- Easy to Clean 
- Abrasion + Impact Resistant (Only for Select Substrates) 
- Chemical Resistant 
- Stain Resistant 
- Class A Fire Rated (LuxCore™ Plus + Polycarbonate) 
- ArmorCoat™ Available 



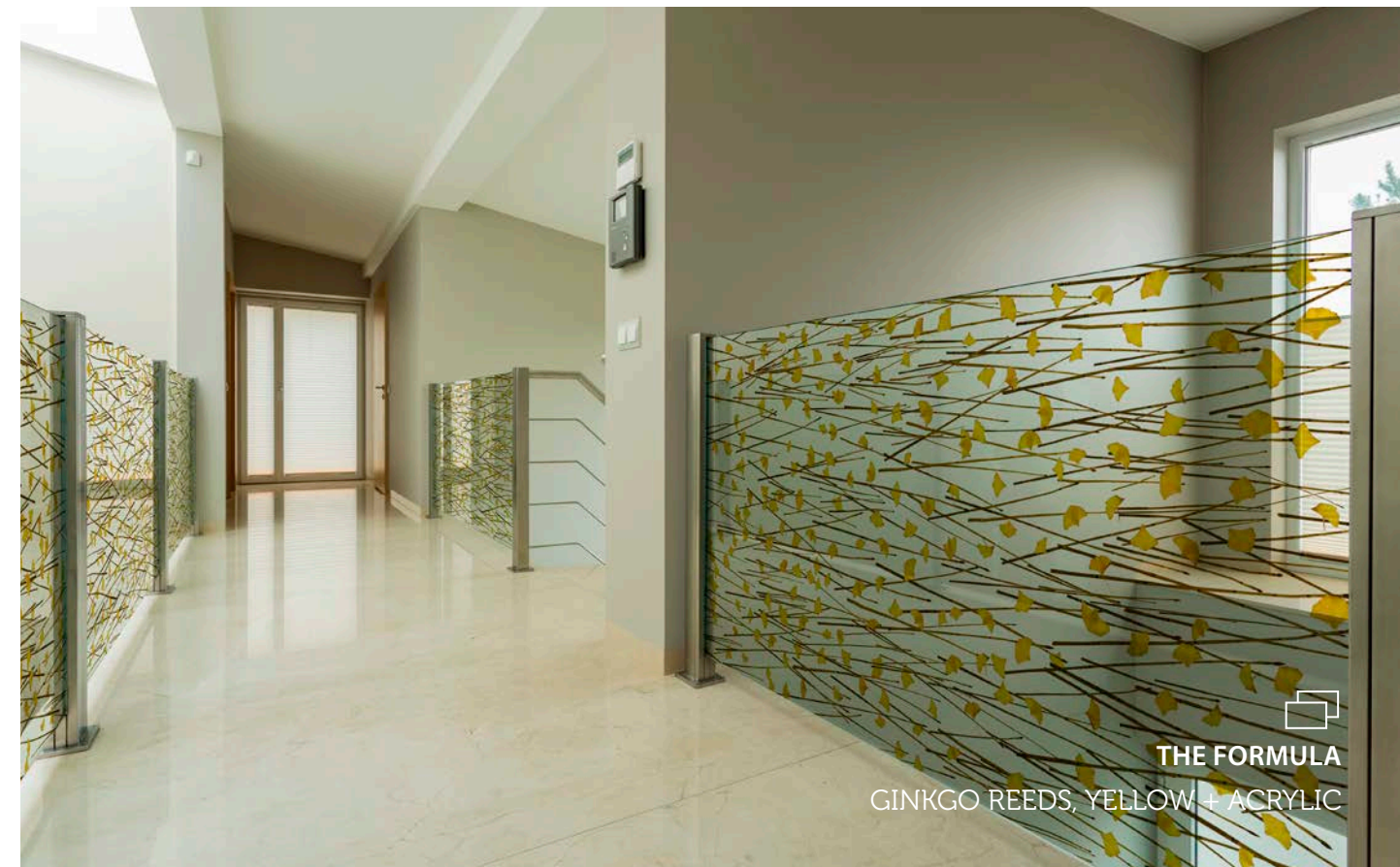
THE FORMULA
OVERSIZED GREEN LEAF + ACRYLIC



THE FORMULA
BIRCH + LUXCORE PLUS



THE FORMULA
BIRCH + LUXCORE PLUS



THE FORMULA
GINKGO REEDS, YELLOW + ACRYLIC

Solutions

Signage & POP Applications: Make a Statement & Capture Customers' Attention

While Fusion is great for showing off a company's design aesthetic and culture, it also offers a branding opportunity that adds excitement and individuality. Fusion offers a variety of substrates for applications, such as:

- Indoor Signage
- Kiosks
- Exhibits

Choose from a variety of substrates, such as:

- Acrylic (4' x 8' Sheets)
- Aluminum
 - FusionSwirl (Hand Swirled, 4' x 10' Sheets)
 - Gloss or Matte White (Photorealistic Quality, 4' x 8' Sheets)
 - Mill Satin (Smooth, "Raw" Aluminum, 4' x 8' Sheets)
 - Pebble (Uniquely Textured, 4' x 8' Sheets)
 - Aluminum Composite (4' x 8' Sheets)
- Clear PVC (4' x 8' Sheets)
- Digital High Impact Styrene (4' x 8' Sheets)
- FRP (Available in Gloss or Matte White, 4' x 8' Sheets)
- LuxCore Plus .045" (Class A Fire Rated, 4' x 8' Sheets)
- LuxCore Plus .060" (4' x 8' and 5' x 10' Sheets)
- LuxCore Plus .120" (4' x 10' Sheets)
- Polycarbonate (Class A Fire Rated, 4' x 8' Sheets)

Both FRP and LuxCore Plus meet sanitary codes for easy-to-clean, washable, wipeable surfaces – perfect for hospitality and healthcare environments.

- ### Features
- Idea Library with Hundreds of Stock Images 
 - Custom Capabilities 
 - Easy to Install 
 - Easy to Clean 
 - Lightweight + Flexible 
 - Abrasion + Impact Resistant (Only for Select Substrates) 
 - Chemical Resistant 
 - Stain Resistant 
 - UV Resistant (Digital Printing) 
 - Class A Fire Rated (LuxCore™ Plus + Polycarbonate) 
 - ArmorCoat™ Available 



THE FORMULA
CUSTOM ART + ALUMINUM COMPOSITE



THE FORMULA
CUSTOM ART + ACRYLIC



THE FORMULA
CUSTOM ART + ACRYLIC

Solutions

Artwork & Murals: Think Outside the Frame

Fusion is perfect for artistic applications, such as:

- Large-Scale Murals
- Mounted Wall Art
- Multi-Panel Applications

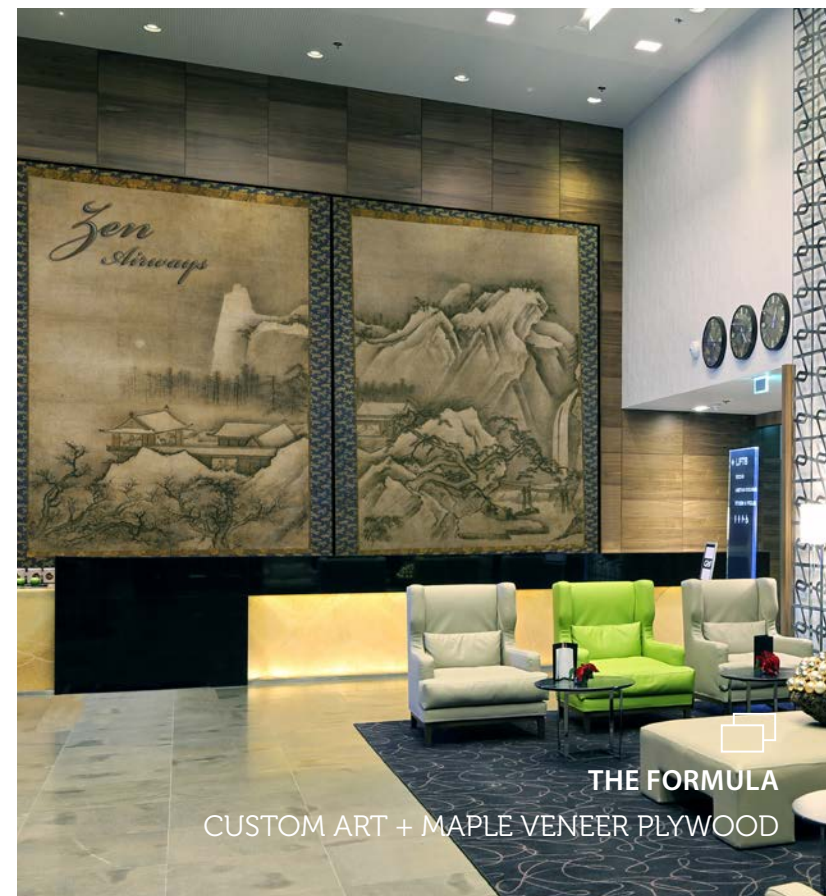
Every multi-panel project or custom mural is manufactured to exact specifications. Choose from a variety of substrate, such as:

- Acrylic (4' x 8' Sheets)
- Aluminum
 - FusionSwirl (Hand Swirled, 4' x 10' Sheets)
 - Gloss or Matte White (Photorealistic Quality, 4' x 8' Sheets)
 - Mill Satin (Smooth, "Raw" Aluminum, 4' x 8' Sheets)
 - Pebble (Uniquely Textured, 4' x 8' Sheets)
 - Aluminum Composite (4' x 8' Sheets)
- Clear PVC (4' x 8' Sheets)
- Digital High Impact Styrene (4' x 8' Sheets)
- LuxCore Plus .045" (Class A Fire Rated, 4' x 8' Sheets)
- LuxCore Plus .060" (4' x 8' and 5' x 10' Sheets)
- LuxCore Plus .120" (4' x 10' Sheets)
- Polycarbonate (Class A Fire Rated, 4' x 8' Sheets)
- Wood
 - Hardboard (Available in Gloss or Matte White, 4' x 8' Sheets)
 - Maple Veneer Plywood (4' x 8' Sheets)

LuxCore Plus meets sanitary codes for easy-to-clean, washable, wipeable surfaces – perfect for the hospitality and healthcare environments

Features

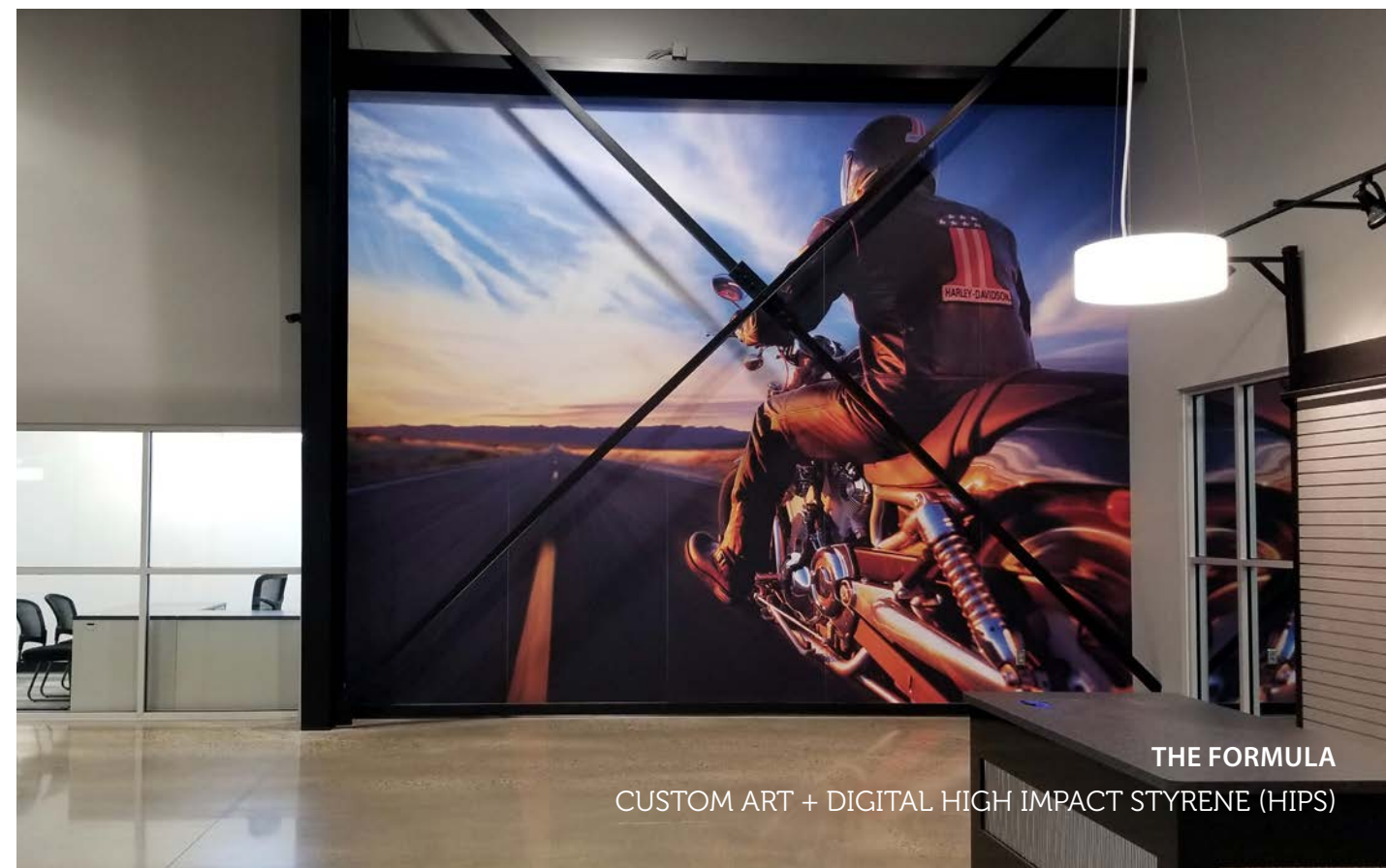
- Idea Library with Hundreds of Stock Images 
- Custom Capabilities 
- Easy to Install 
- Easy to Clean 
- Lightweight + Flexible 
- Abrasion + Impact Resistant (Only for Select Substrates) 
- Chemical Resistant 
- Stain Resistant 
- UV Resistant (Digital Printing) 
- Class A Fire Rated (LuxCore™ Plus + Polycarbonate) 
- ArmorCoat™ Available 



THE FORMULA
CUSTOM ART + MAPLE VENEER PLYWOOD



THE FORMULA
CUSTOM ART
+ LUXCORE PLUS (BACKED)



THE FORMULA
CUSTOM ART + DIGITAL HIGH IMPACT STYRENE (HIPS)

Solutions

Digital Printing on MirroFlex: Take Your Vision to a Whole New Dimension

Architectural and interior design are benefiting from multilayer imaging in applications such as dimensional wall panels most often seen in commercial, hospitality, and retail applications. Consider combining Fusion with our MirroFlex™ product line to double the impact in the same amount of space. Choose from:

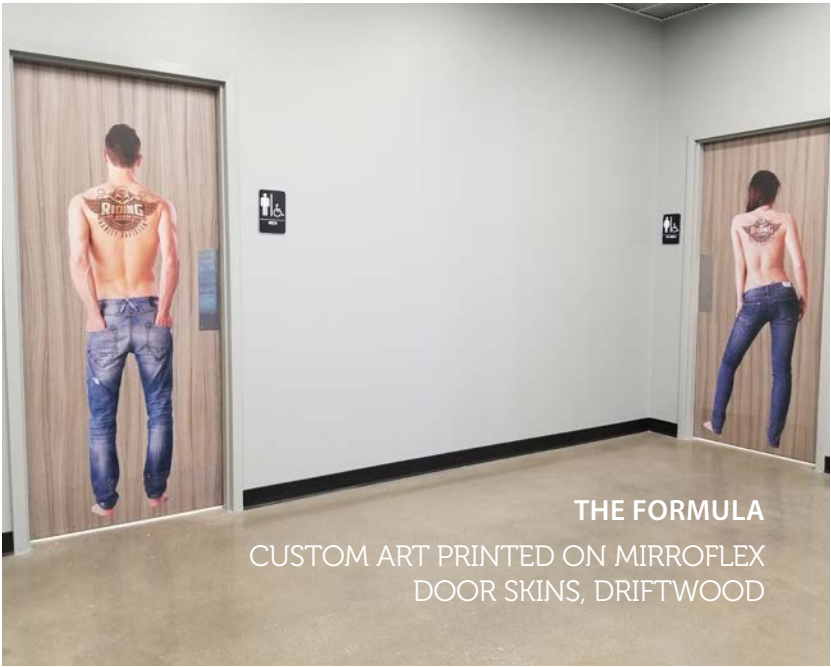
- MirroFlex Door Skins
- MirroFlex Flat Sheets
- MirroFlex Structures

Our Fusion team can add spot color and even print art or company logos as a unique application. You'll also be able to take advantage of the flexibility and durability of MirroFlex to accommodate a variety of applications in high-traffic environments.

MirroFlex Structures are deeply textured, decorative, thermoplastic wall panels and ceiling tiles. This product line is available in multiple sizes suitable for walls (4' x 8' and 4' x 10' panels), wainscoting (30" - 32" x 48"), backsplashes (18" x 24"), ceilings (2' x 2' and 2' x 4' tiles), display fixtures, furniture, and more.

Features

- Custom Capabilities 
- Easy to Install 
- Easy to Clean 
- Lightweight + Flexible 
- Abrasion + Impact Resistant 
- Chemical Resistant 
- Stain Resistant 
- Fire Retardant 
- UV Resistant (Digital Printing) 
- TuffCote™ Added to Some MirroFlex Finishes 



ARTFUL METALS COLLECTION

Modern Designs
Colorful Patinas
Rich Oxidized Coppers
Easy to Install
Unbacked Metals



THE FORMULA

FUNKY COLD PATINA + PEBBLE ALUMINUM

Artful Metals Collection

Modern Designs Available on Unbacked Specialty Metals

Our Fusion product line offers the Artful Metals Collection. Artful Metals are 15 unique metal and patina-inspired wall panel designs ranging from bright colorful patinas and rich oxidized coppers, to rare and artistic, modern-treated metals.

The Artful Metals Collection is available on a variety of ATI's 4' x 8' unbacked metal substrates. Our unbacked metal substrates are easy-to-install with no counterbalancing required and offer a wide range of options, including FusionSwirl, Gloss or Matte White, Mill Satin, Aluminum Composite, and our uniquely textured Pebble Aluminum.

With the Artful Metals Collection, you can create a unique decorative surfacing solution for your application that can be used as wall art, decorative wall protection, large-scale murals, wall dividers, and more.

Unbacked Metal Substrates

- FusionSwirl (Hand Swirled, 4' x 10' Sheets)
- Gloss or Matte White (Photorealistic Quality, 4' x 8' Sheets)
- Mill Satin (Smooth, "Raw" Aluminum, 4' x 8' Sheets)
- Pebble Aluminum (Uniquely Textured, 4' x 8' Sheets)
- Aluminum Composite (4' x 8' Sheets)

Features

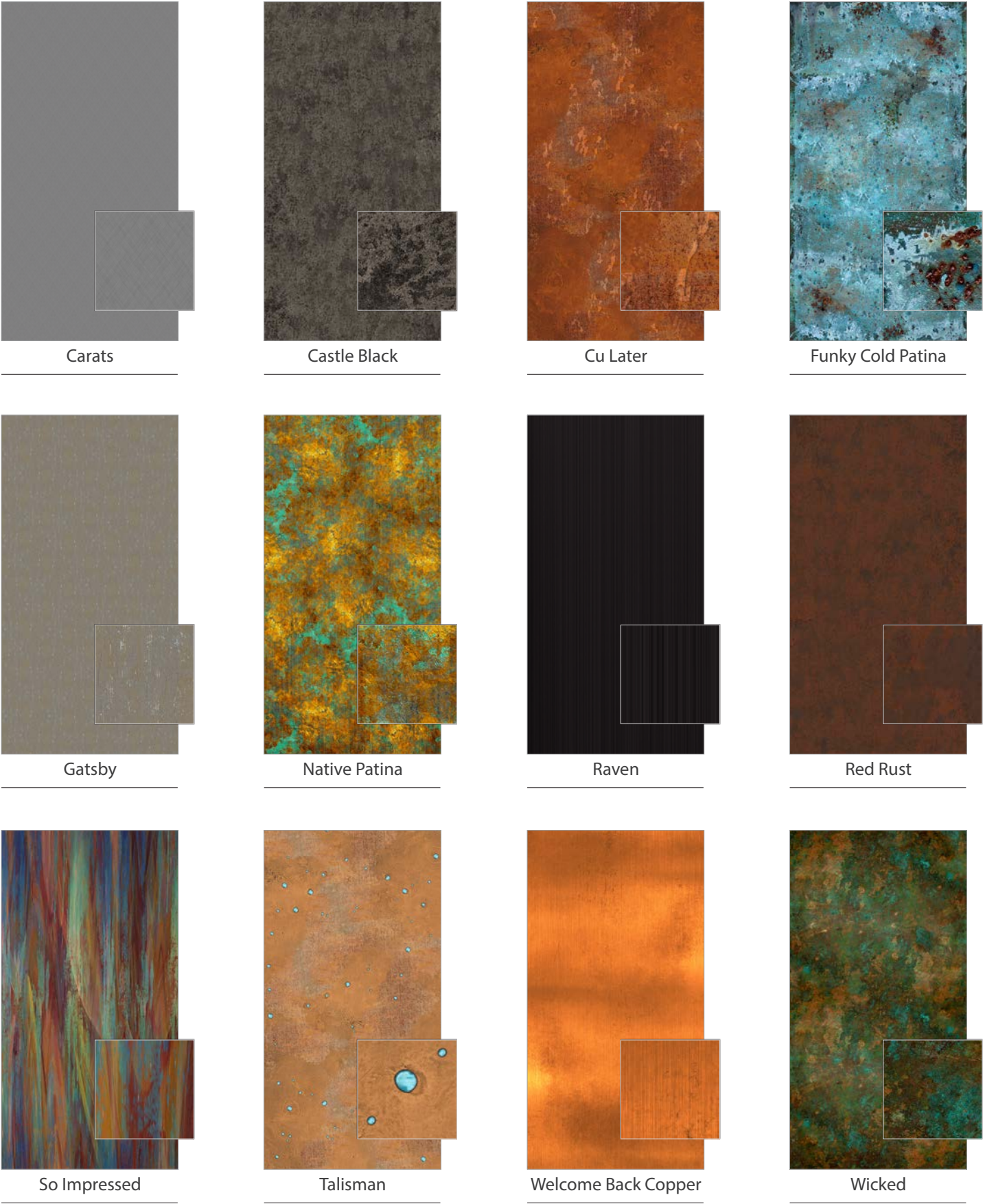
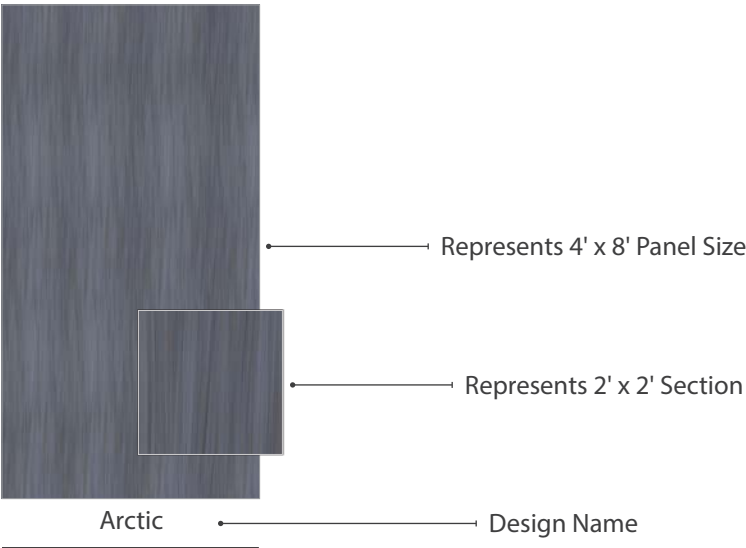
- 15 Unique Metal Designs 
- Custom Capabilities 
- Easy to Install, Unbacked Specialty Metals 
- Can be Bent for Some Curved Applications 
- Abrasion + Impact Resistant Options Available 
- Chemical Resistant 
- Stain Resistant 
- ArmorCoat™ Added to Some Fusion Substrates 



Artful Metals Collection

Be Inspired: 15 Unique Metal and Patina-Inspired Designs

Combine these Artful Metal designs with a variety of 4' x 8' or 4' x 10' unbacked metals to create a custom look for your space.



Lake Orion Nursing Home & Rehabilitation Center

Lake Orion, Michigan

This institutionalized rehabilitation center suffered from a lack of nature and a need of color, but still needed to adhere to code for heavily trafficked areas. See how designer, Aparna Bonda of Finished Spaces, LLC, used Fusion LuxCore™ to bring nature inside to the patients living there.

How did you come up with the design?

I wanted to bring nature in and create a picturesque escape for both the residents and staff strolling through the, otherwise mundane, hallways of Lake Orion Nursing and Rehabilitation Center.

What was the end goal?

There were multiple goals for this project. Apart from the fact that I wanted nature-inspired photographic murals to adorn the hallways, I needed a product that would withstand the constant abuse from the foot pads of wheel chairs that residents wheel themselves in, as well as the large food/medicine carts that are constantly moving through the hallways. I was also looking for a product slim enough so that it wouldn't protrude into the existing floor space and it obviously had to be Class A Fire rated. ATI's Fusion product allowed me to bring both beauty and function together!

Why did you choose this product from ATI?

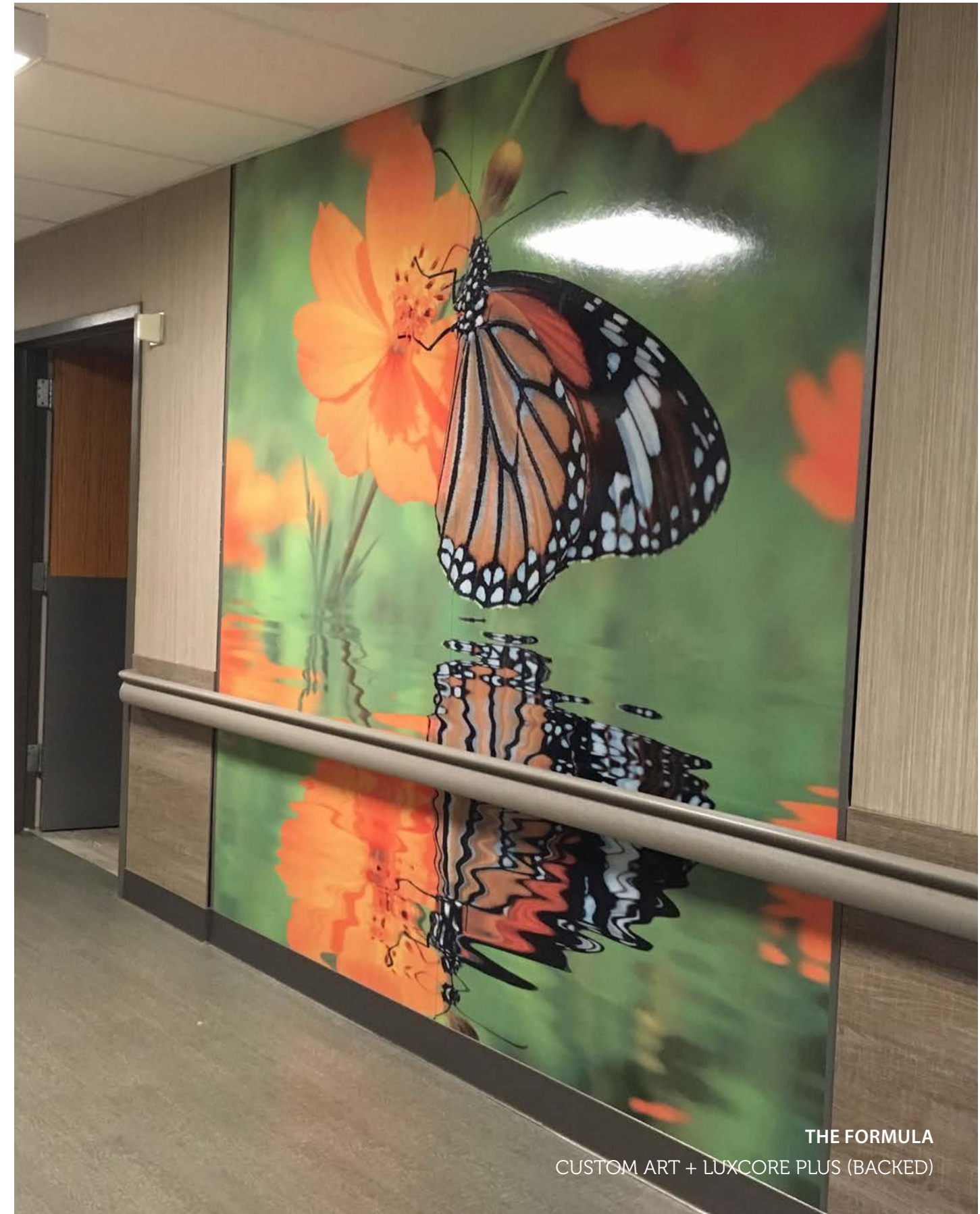
For all the reasons stated for end goals, reliability of product, as well as quality and durability.

Would you use it again?

Absolutely! I would also like to mention the education about products and the prompt sample delivery I received from our Regional Representative, Andrea Angers, really helped with the decision making process!

Any other comments?

Thank You for making this design possible. It brings smiles to both the residents and people working in the facility!



THE FORMULA
CUSTOM ART + LUXCORE PLUS (BACKED)

Springfield Elementary School

Charleston, South Carolina

The Image Resource Group created a nature-inspired design for Springfield Elementary in Charleston, South Carolina. This mural reinforces our instinctive biological connection with nature, nurturing the health and well-being of the students.

Who completed the installation?

We had a team of contractors for the installation.

How did you come up with the design?

The design was a collaboration with the architect, photographer, and designers.

Were there any challenges?

It was our first time working with this material and we didn't encounter any issues. We were happy with the outcome.

What was the end goal?

To install a mural inside this school that effectively brought the outside in for the students to enjoy.

Why did you choose this product from ATI?

We were excited about ATI's Fusion program and the ability to combine our custom art with a choice of durable substrates. LuxCore™ Plus was specified by the architect for this project because it offers second-surface imaging, making it extremely durable in high-traffic areas.

Would you use it again?

Yes, we were very happy with the outcome of this project!



Cincinnati Renaissance Hotel

Cincinnati, Ohio

In downtown Cincinnati stands the historic Bartlett Building – designed and built in 1901 by famed architect Daniel Burnham. Once the tallest building in Ohio, this Neoclassical-style 19-story tower has gone through many transformations, eventually taking its place on the U.S. National Register of Historic Places.

In 2013, after being vacant for 3 years, Columbia Sussex bought the building and Renaissance Hotels agreed that it would be the perfect place to design a boutique hotel for a vibrant city such as Cincinnati. It now features 323 rooms with upscale amenities, contemporary design, and beautiful views of downtown.

Challenge:

Renaissance Hotels are known for their interest in regionalism as well as enhancing and respecting the history of older buildings. Cauhaus Design was hired to help transform the historic structure into a dynamic, modern hotel. As the main focal point of the design, Robert Laschever and Tobin Schermerhorn from Cauhaus Design decided to play off of the banking history of the Bartlett building in order to create and tell its story.

When asked how the team formed their idea, Laschever enthusiastically recalls, “In the basement is the most phenomenal vault and vault space I’ve ever seen. There is a beautiful 8’ diameter round vault door and the room is lined with incredible, metal safety deposit boxes – that was the inspiration.”

Using the vault room as the design foundation, Cauhaus Design looked for fun and creative ways to tell the banking story throughout the hotel. For one of the more humorous design elements, they decided that each restroom could look like a vault. “Walking into the stalls in the restroom would be like walking into a safe room containing safety deposit boxes.”

Solution:

Cauhaus Design knew that in order to give a realistic appearance of a vault door, they had to find a company that could provide durable, high-quality custom graphics on a metal substrate. To bring their vision to life, they contacted Fashion Architectural Designs, an

ATI distributor, to find the perfect solution. Fashion Architectural Designs knew exactly what to recommend – ATI’s Fusion process, which fuses an image with the substrate surface.

Cauhaus Design and ATI worked together to create a graphic which featured a combination dial and bolts to mimic the look of a vault door which was fused onto ATI’s Mill Satin Aluminum substrate. The metal substrate was perfect for the high-traffic environment and the graphic is an unmistakable clue into the hotel’s history. To continue the design, tiles lining the walls inside the restroom look like deposit boxes, completing the vault effect.

Laschever also points out that the doors are also evocative elements that make guests curious about the building’s past and its story. He says, “It’s a wonderful educational insight into the history. It’s also playful and fun and everyone seems to love it.”



THE FORMULA
CUSTOM ART + MILL SATIN ALUMINUM

Cresta Shopping Center

Randburg, South Africa

Cresta Shopping Centre is the premier mall located in Randburg, South Africa, right outside Johannesburg. Built in 1977, the mall is one of the largest shopping centers in the Southern Hemisphere. It has experienced many renovations over the years, the last dating back to 1993. Since then, more than half a billion people have made Cresta their shopping destination, making an upgrade necessary to the property. As part of their \$30 million dollar refurbishment and expansion program, the center refreshed their design to showcase the nostalgia of the building while simultaneously appealing to a younger market.

The designers and architects on the project had already approved a particular design when they met Dean Armstrong from Ergosystems, a South African ATI distributor, who showed them what ATI products could accomplish. Armstrong quickly offered the team a new design concept using nature-inspired images. They fell in love with his design scheme and overnight switched from their original concept to one featuring ATI's Fusion program, which marries stock or custom art with multiple substrate choices, creating beautiful, durable architectural surfaces.

Challenge:

The project had multiple challenges – the designers wanted a themed concept that showcased novel products and images that would attract new stores and tenants. In addition, the material used had to be durable and strong enough to hold up to a high-traffic retail environment that hosts nearly 18 million shoppers annually.

Armstrong recalls, "They were looking for products that people had never seen before, something new and exciting."

Solution:

Armstrong partnered with ATI to produce 10 different Fusion murals, using a sublimation process to actually embed images into the substrate. Each mural showcases a different over-sized, nature-inspired design from hydrangeas and daisies to black-and-white butterflies. The natural elements are fun and beautiful, but also

evoke a calm and relaxed feeling in an otherwise hectic environment.

To create the look and feel desired, Armstrong fused the images into white gloss aluminum. Not only did the substrate provide the necessary durability and impact resistance needed, the glossy properties of the aluminum allowed the images to pop off the walls.

Another advantage of the substrate was its modular capabilities, which will make future updates a breeze and create less waste. "It's a green solution," said Armstrong. "The next time we revitalize the shopping center, we can un-clip the old panels and clip up new ones."

Armstrong notes the finished design was a win/win for all involved. "Everyone is very happy with the outcome to the point that we're now involved with the same client in multiple shopping centers," said Armstrong. "Professional architects and designers see it as a masterpiece."



THE FORMULA
CUSTOM ART + GLOSS WHITE ALUMINUM

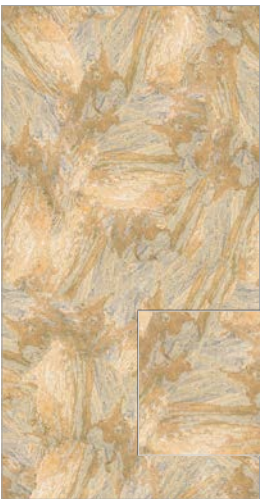
Idea Library

Our Ever-Expanding Line of Graphics for Fusion

While new designs are constantly added to our Fusion Idea Library, one of the most unique features of Fusion is that virtually any image can be used with the substrate of your choice. This is just a small sampling of available images. Visit ATILaminates.com/Idea-Library to view the most current selections in our Idea Library. Count on ATI's in-house Fusion specialists to bring your vision to life!

Idea Library Categories

- Abstract
- Artful Metals
- Metallics
- Murals
- Organics
- Patterns and Color
- Photographic and Illustrated
- Stone and Tile
- Wood



Represents 4' x 8' Panel Size

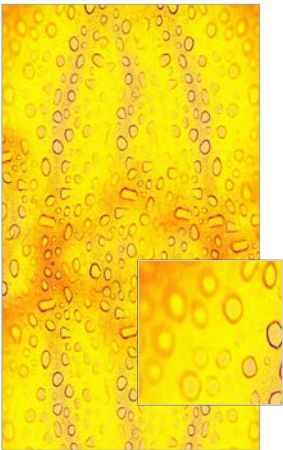
Represents 2' x 2' Section

Design Name

Viara

Abstract

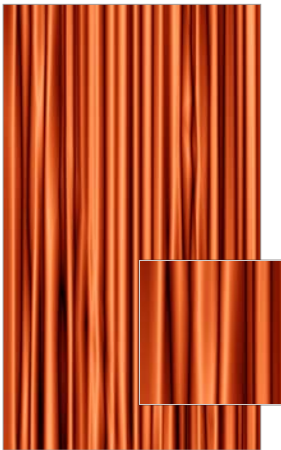
View the entire ATI Idea Library at ATILaminates.com/Idea-Library



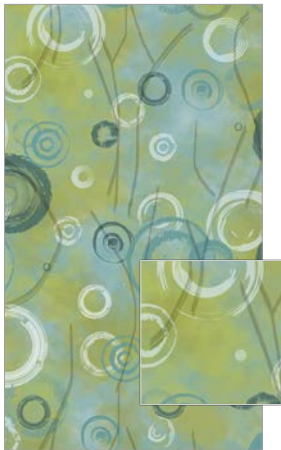
Chroma Doradus



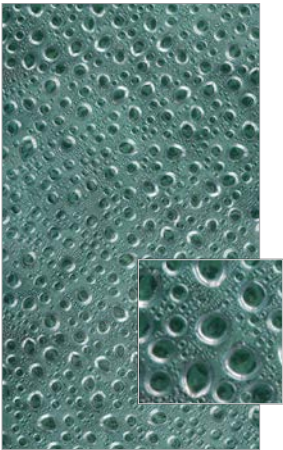
Copper Wisp



Folds Orange



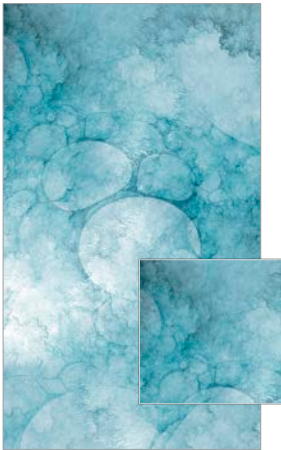
Green Blue Art



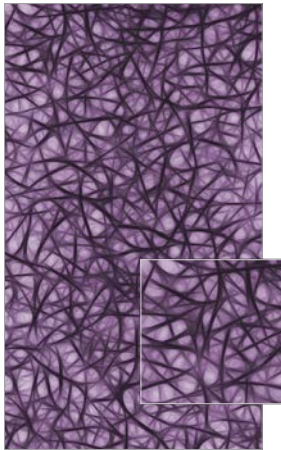
Hydrodynamics



Nebula Helix

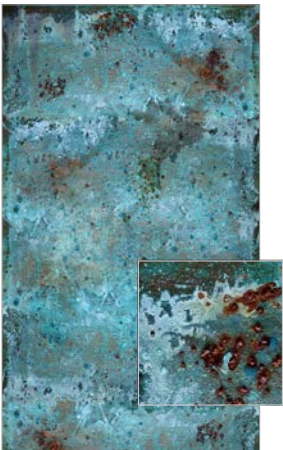


Out of the Blue

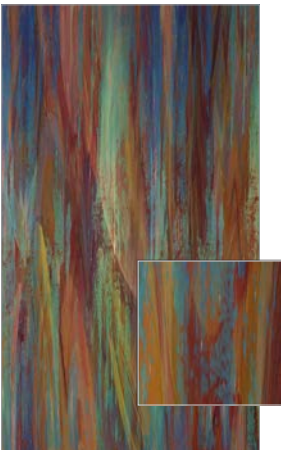


Whispers Violet Smoke

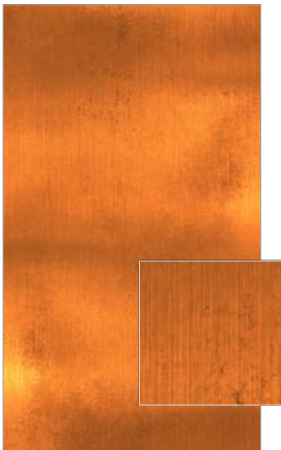
Artful Metals Collection



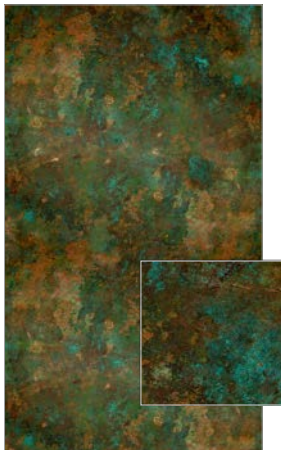
Funky Cold Patina



So Impressed



Welcome Back Copper

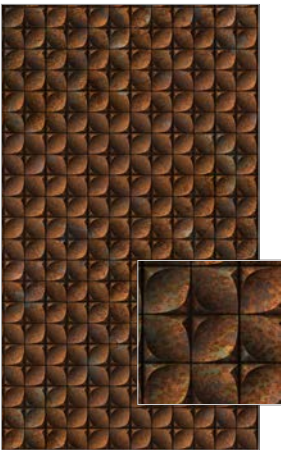


Wicked

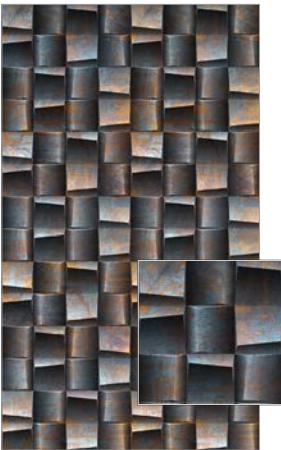
Metallics



Burnished Silver



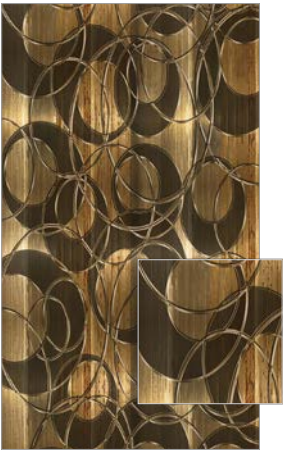
Cast Iron Squares Rusted



Cubism Rusted Steel



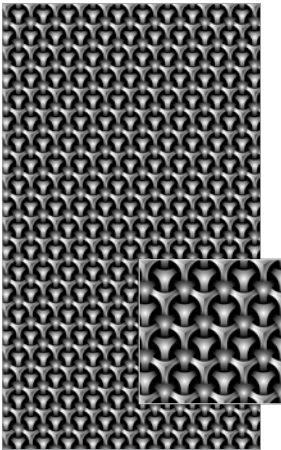
Diamond Carved Filigree



Gold Fisheye Ribbon



Heavy Gears



Metallic Weave Steel



Reptilian Bronze

Murals



Aspen Forest



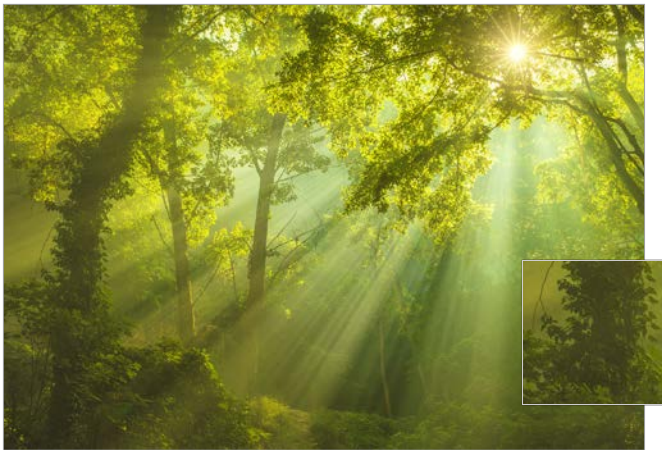
Beautiful Sky

Murals

View the entire ATI Idea Library at [ATILaminates.com/Idea-Library](https://www.ATILaminates.com/Idea-Library)

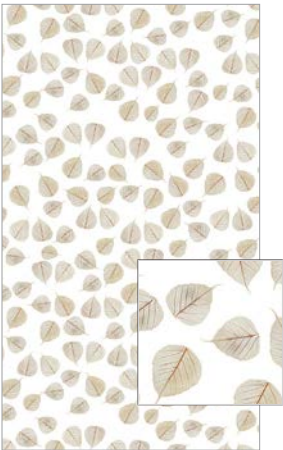


Mountains



Sunrise Forest

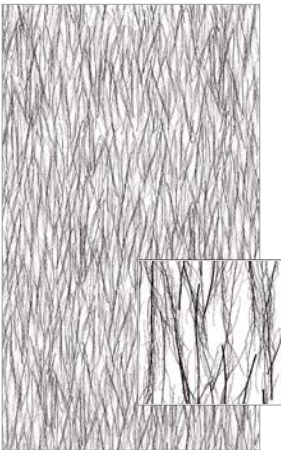
Organics



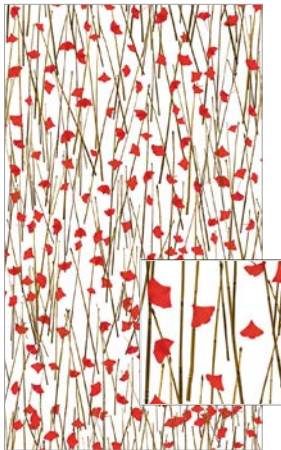
Aspen Leaves



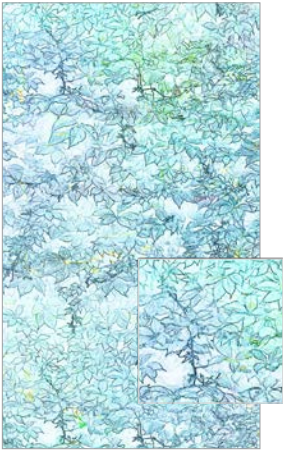
Bamboo Green, Vertical



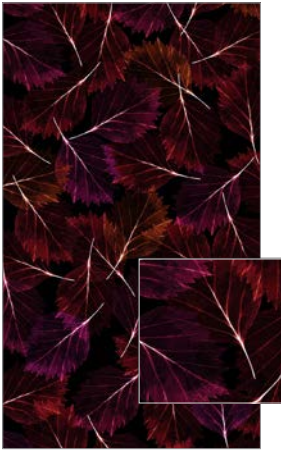
Birch



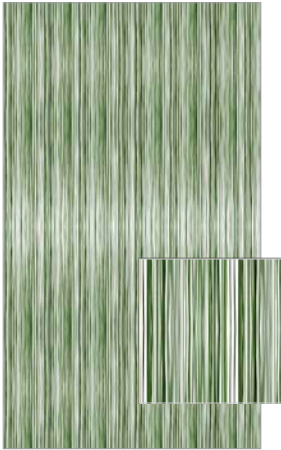
Ginkgo Reeds, Red



Hedgerow Indigo



Leaves Modern, Inverted

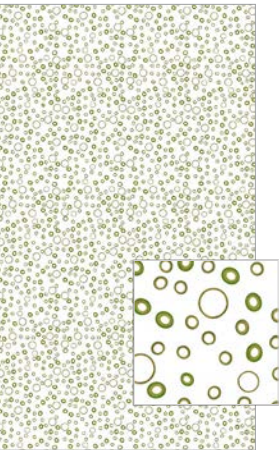


Spring Grass



Twigs

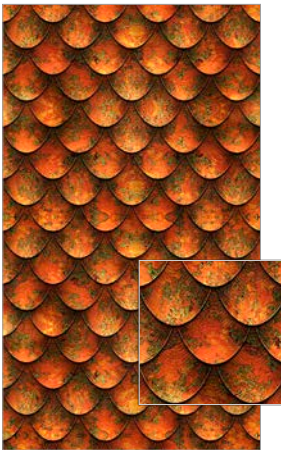
Patterns and Color



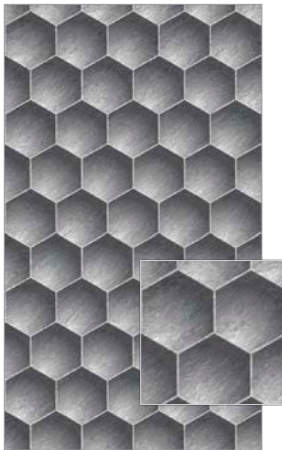
Bamboo Rings, Green



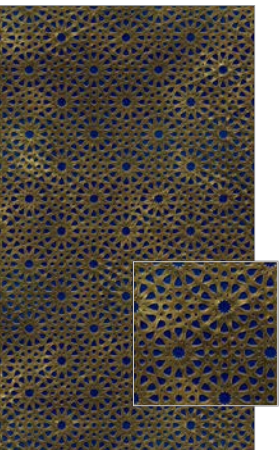
Circle Back



Dragon Scale



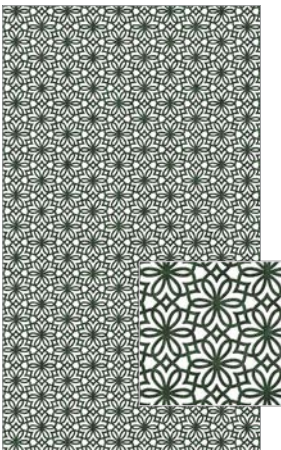
Honeycomb Carve, Large



King of Persia



Malaga Red



Old World

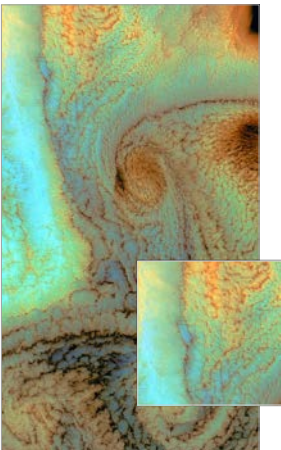


Undulation Pastel

Photographic and Illustrated



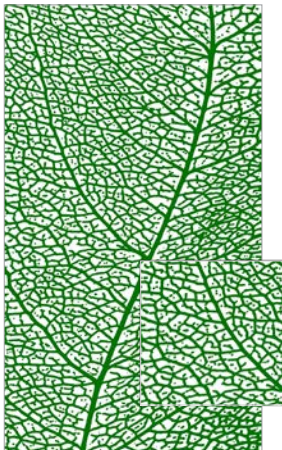
Brick Wall, Peeling Paint



Earth 15



Greenery Wall



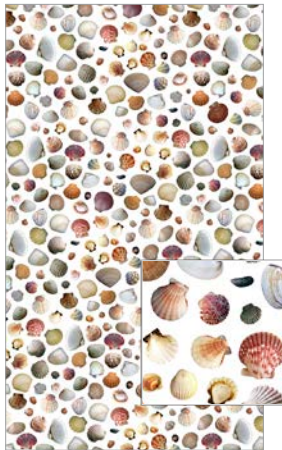
Leaf Skeleton

Photographic and Illustrated

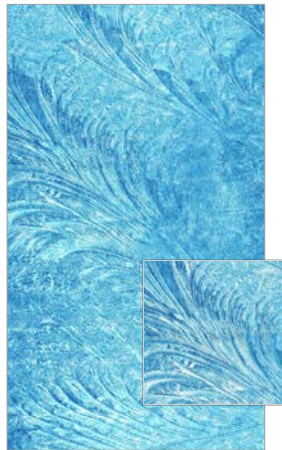
View the entire ATI Idea Library at [ATILaminates.com/Idea-Library](https://www.atilaminates.com/Idea-Library)



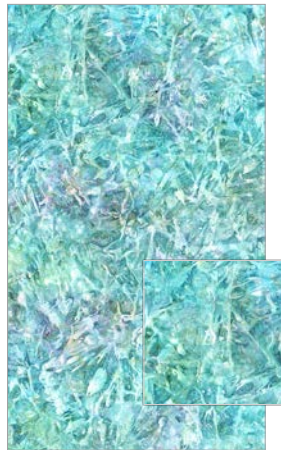
Shattered Glass



Shells

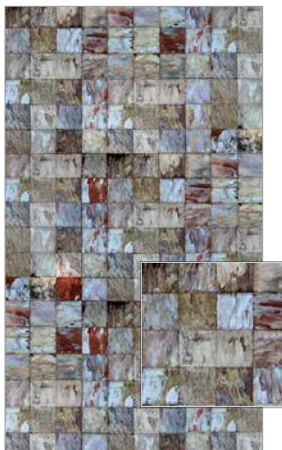


Shiver



Spring Ice

Stone and Tile



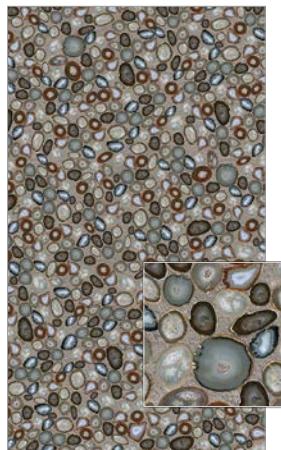
Ancient Stone Tiles



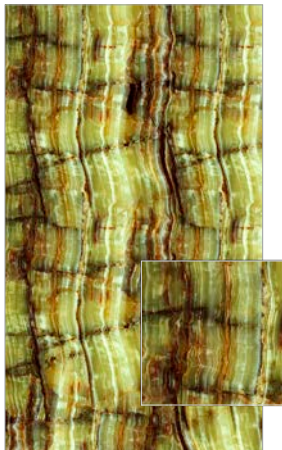
Cappuccino Panels



Emperador Light



Geode Natural



Green Onyx



On Target Light Stone



Onyx Vein Cut Sandy



Stacked Wall Tan



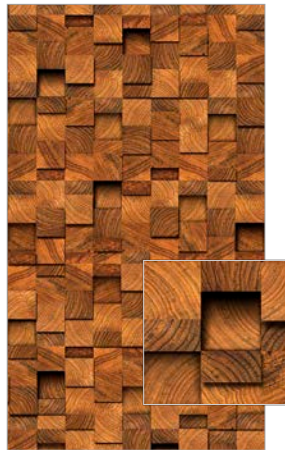
Birdseye Maple, Light



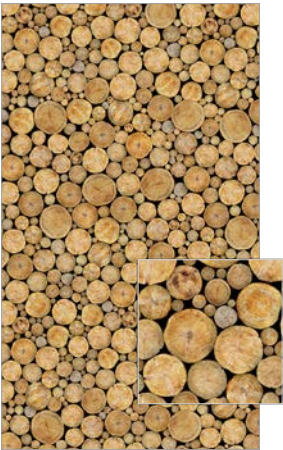
Cathedral Cherry, Dark



Cedar Shakes Rustic



Cubism Oak



End Grain



Oak Light



Tree on Dark Cherry



Zebrano Medium



THE FORMULA
TREE ON DARK CHERRY + MILL SATIN ALUMINUM

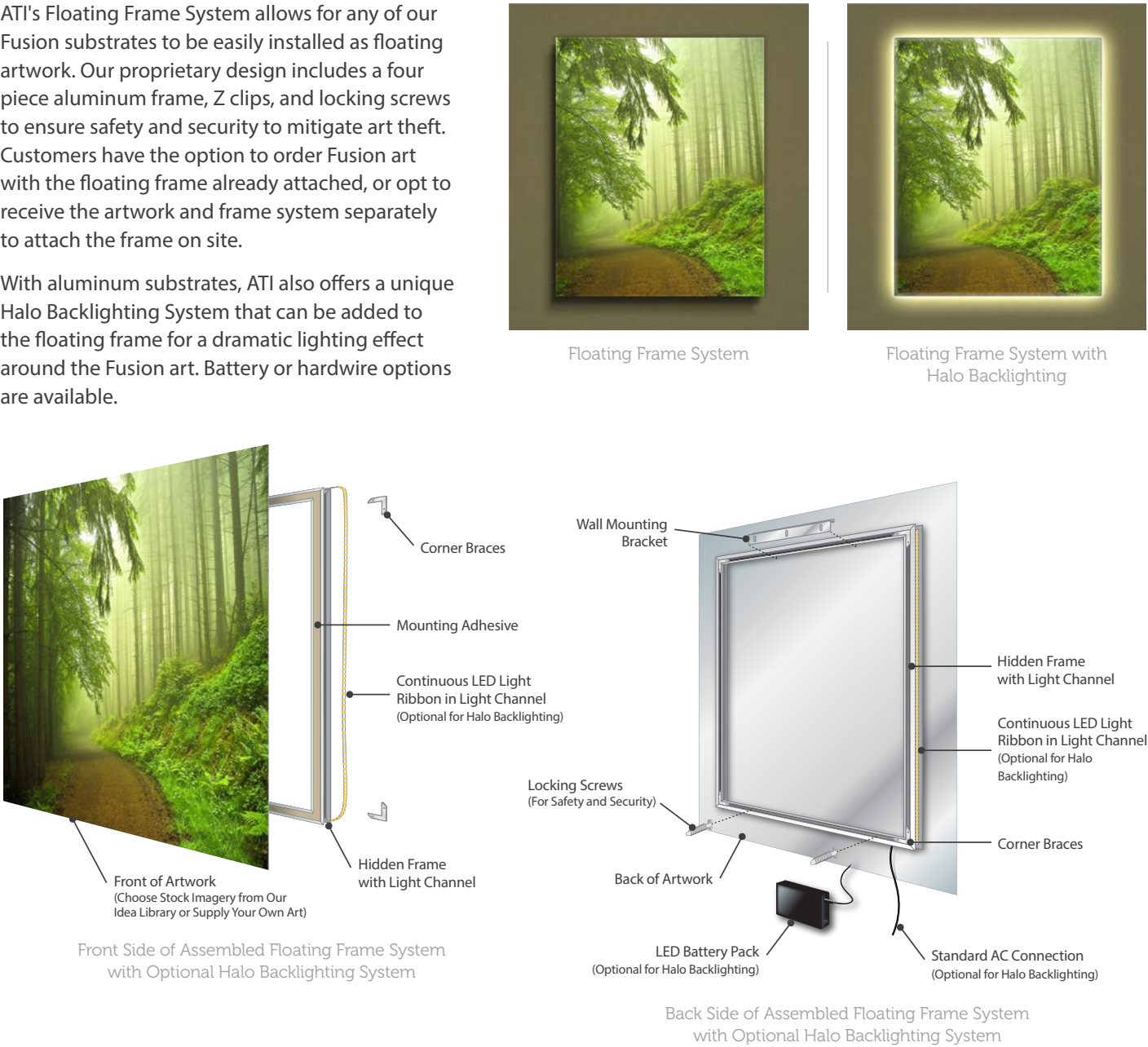
Accessories

ATI offers a variety of solutions to complete the look of your Fusion installation. Accessory recommendations will vary based on product, specs, and application. Please contact us for more details.

Floating Frame System and Halo Backlighting System

ATI's Floating Frame System allows for any of our Fusion substrates to be easily installed as floating artwork. Our proprietary design includes a four piece aluminum frame, Z clips, and locking screws to ensure safety and security to mitigate art theft. Customers have the option to order Fusion art with the floating frame already attached, or opt to receive the artwork and frame system separately to attach the frame on site.

With aluminum substrates, ATI also offers a unique Halo Backlighting System that can be added to the floating frame for a dramatic lighting effect around the Fusion art. Battery or hardwire options are available.



Hanging Cable System

ATI's Hanging Cable System offers customers the ability to hang a variety of Fusion products from ceilings as a unique and functional, decorative solution. Create the illusion of floating divider panels, artwork, signage, and translucent panels, and more.

Suitable for retail, hospitality, healthcare, and commercial environments, our Hanging Cable System is available in kit form with all necessary hardware for easy installation. This includes ceiling and floor mounting hardware to ensure a rigid installation that minimizes movement. Once the system has been installed, you can easily adjust the height of the Fusion product to suit your needs. Other rigid hanging systems are available for special order.



Standoffs

Our Brushed Stainless Steel Standoffs are the ideal solution for adding dimension to your project. With these easy-to-install, durable, flat top standoffs, you can hang a variety of Fusion substrates, including Acrylic, LuxCore Plus, Polycarbonate, Wood, and more.

ATI's standoffs are perfect for high-traffic areas including hospitality, healthcare, education, and commercial environments. We offer standoffs in 1½", 1", and ¾" sizes, available in 2", 3", and 4" barrel length. Other sizes are available for special order.



Brushed Stainless Steel Standoffs
Available in 2", 3", and 4" Barrel Length

Contact ATI Laminates



Follow Us on Social



Check ATILaminates.com for updated technical information and installation videos for Fusion products.

Art Requirements, Terms, & FAQs

You've got questions? We've got answers. ATI is committed to helping you with your Fusion project every step of the way. Please contact us if you have any questions or are unsure about our art requirements.

I want to submit my own photo(s)/file(s), what size and resolution should it/they be?

Ideally, your photo/file should be a full size image at a native resolution of 300 ppi or minimum 150 ppi. If you do not have these file sizes, please send what you have and we will evaluate the image and determine if it is suitable for your needs. Depending on substrate and function, you may be very happy with the quality achieved with a less than perfect image. Fusion can be a very forgiving process, and we have worked with many files that fall way below any sort of conventional resolution standards with good results.

My photo might need some "photoshopping;" can you guys do that?

Yes, we can photoshop images to make them look their best for your project with an additional charge. Keep in mind that a higher resolution does not always equal higher quality. An example of this is when a photo is taken in low light. Digital cameras tend to create "noise" via random speckles of off color when there should be none. It is much easier to manipulate and "fix" a lower resolution photo that is shot well than to "fix" a photo with high resolution that is poorly shot.

What file formats do you accept?

We accept all common raster and vector image formats. Common raster formats include: TIFF, JPG, PNG, PSD (Adobe Photoshop), etc. Common vector formats include: AI (Adobe Illustrator), EPS, and SVG. We also accept PDF's, but they can contain any number of different raster and vector formats within the PDF "wrapper," so it is important to understand what is included in the PDF file.

Does my file need to have bleeds?

Yes. It is very difficult to perfectly match an image to the exact size of a substrate in a moving printer/press where heat expands the substrate. For this reason, all images for production need to include bleed. The amount of bleed can vary, but we prefer to have .25" (1/4 inch) of bleed on all edges. A .50" (1/2 inch) of bleed may be requested for projects that require precise cutting. If you didn't build in a bleed on your file, don't worry; we can help you with your project! Call us and we'll connect you with a Fusion specialist.

Should my files be RGB or CMYK?

RGB files naturally have a broader range of available colors than the CMYK color space. RGB files will allow us to produce the most vibrant and detailed print possible.

I want to color match an existing item that I have. Can you guys color match?

For PMS color matches, please provide us with the Pantone number and we will approximate it as closely as possible. We can also match various paint chips, corporate logos, and a variety of other sources.

My photo/file has text. What size should the font be?

The smallest optimum size for fonts is 12 point. Some fonts require a larger point size or bolding, especially if reverse copy is needed. Due to the thousands of existing fonts, keep in mind that we may not have the requested font in-house. Please provide type as "outlines" so that type conversion issues are avoided.

How do I know what substrate to use for my project?

Already know what substrate you want? Great! If not, no worries! Please talk with us about your project and we can help you. Keep in mind that your choice of substrate plays a very critical role in image quality, as well as the look and feel that you want for your project. We can help you find what works best for you.

Do you have cleaning and care information available?

Due to the variety of substrates used, please see the Technical Specs on our website at ATILaminates.com/Resources.

How should I store my Fusion project before installation?

Store flat and acclimatize in the same environment for at least 24 hours before fabrication.

What sizes are available?

In general, all stock substrates listed on pages 10-11 are available as 4' x 8' panels. Sublimation allows for 5' x 10' nominal printing, while our digital printer can print at 5' width and virtually unlimited length. Other options may be available. Please ask your ATI representative for details.

Useful Terms

1st Surface [Printing]

This is the front of a substrate. For digital prints on opaque substrates, this will be the only surface printed on.

2nd Surface [Printing]

This is the back of the substrate. This is not typically printed on unless the material is clear like glass, acrylic, or clear PVC. 2nd surface printing allows for a three-dimensional look and feel while protecting the image under the substrate.

Bleed

The bleed is a small space that extends beyond the trim line around the actual printed area. This space allows for a little "wiggle" room in the printing process so the image does not miss the substrate during printing.

CMYK + White

Our digital printer uses CMYK + W for colors. These are the initials for "Cyan, Magenta, Yellow, Black, and White."

DPI (Dots Per Inch)

DPI is a measure of printer output resolution; the higher the DPI, the finer the image quality.

Large Format

This term refers to anything that has to be printed using a specialty printer commonly larger than 16" x 20". Large format prints are meant to be viewed farther than an arm length away and because of this they may look pixelated up close. At a distance, however, these prints are sharp and readable.

PPI (Pixels Per Inch)

Stands for "pixels per inch." PPI is used to measure picture resolution.

RGB

The Red, Green, and Blue color space. Typically used in monitors and digital cameras, colors are described in as 0-256 steps of each of the three colors, describing 16.7 million colors.

UV Ink

These inks are cured by UV light as it goes through the printer. This means that the image is dry when it is finished printing and no heat or air drying is necessary. In addition, because UV inks do not dry or cure until they are run through a UV light, it creates less waste in materials, labor, and energy. This also allows for the ink to be exposed to sunlight and used in outdoor settings.

Spot White

This is one of the unique capabilities of digital printing. Artists are able to select the white to print only under a portion of the image to highlight or create opacity while allowing the negative space to be the substrate.

Contact ATI Laminates



Follow Us on Social



➡ Check ATILaminates.com for updated technical information and installation videos for Fusion products.

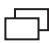
Quick Reference Guide & How to Order

Quick Reference Guide: Substrate Applications & Features

Substrate	Abrasion + Impact Resistant Solutions such as wall protection, wainscoting, elevator walls, bar fronts, etc.	Translucent Solutions such as room dividers, door and display inserts, modesty panels, transparent advertising items, etc.	Signage & POP Applications such as kiosks, exhibits, indoor signage, etc.	Artwork & Murals serve as unique wall coverings, wall art, displays, murals, retail backdrops, etc.
Acrylic		✓	✓	✓
Aluminum, FusionSwirl			✓	✓
Aluminum, Gloss or Matte White			✓	✓
Aluminum, Mill Satin			✓	✓
Aluminum, Pebble			✓	✓
Aluminum, Composite			✓	✓
Clear PVC		✓	✓	✓
Digital High-Impact Styrene			✓	✓
FRP - Gloss, Matte, or Satin White	✓		✓	✓
LuxCore Plus	✓	✓	✓	✓
Polycarbonate		✓	✓	✓
Wood, Gloss or Matte White			✓	✓
Wood, Maple Veneer			✓	✓

Quick Reference Guide: Substrate Sizes

Substrate	4' x 8'	4' x 10'	Available Thickness
Acrylic	✓		.220"
Aluminum, FusionSwirl		✓	.032"
Aluminum, Gloss or Matte White	✓	1	.030"
Aluminum, Mill Satin	✓	1	.032"
Aluminum, Pebble	✓	1	.032"
Aluminum, Composite	✓	1	.118"
Clear PVC	✓	1	.060"
Digital High-Impact Styrene	✓	1	.030"
FRP - Gloss, Matte, or Satin White	✓	1	N/A
LuxCore Plus	✓	✓, 2	.045" (4' x 8'), .060" (4' x 8' and 5' x 10'), and .120" (4' x 10')
Polycarbonate	✓		.125"
Wood, Gloss or Matte White	✓		.125"
Wood, Maple Veneer	✓		3/4"

 Items shown as concept

- ✓ For substrates; available in specified size
- 1 Special order requirements; call Customer Service at 800.849.1320
- 2 Available in 5' x 10' size

How to Order: Client Satisfaction & Quality

Order Processing

Most orders will be acknowledged within 24 hours. Because Fusion products are made to order, standard lead times run approximately 2 weeks depending on the complexity of project and order quantities. ATI's minimum order amount is \$25 USD.

All custom Fusion orders will require sample sign off before production can begin.

Return Policy

Since Fusion products are tailor-made for your project, it is considered custom and therefore non-returnable.

Samples

Due to printer and digital screen limitations, Idea Library artwork shown in this catalog may not accurately reflect Fusion. Request tangible samples to be verified and approved prior to specification and final application.

Conditions and Warranty

ATI Decorative Laminates warrants to the original consumer purchaser for one (1) year after date of purchase that, under normal use and service, MirroFlex™, Fusion, NuMetal™, and LumiSplash™ products are free from manufacturing defects and conform to published specifications. This warranty applies as long as the consumer purchaser and/or installer follows ATI's installation instructions (methods), which also includes using recommended adhesives, when adhering ATI's products to recommended surfaces. ATI Decorative Laminates' products are intended for primarily interior applications.

ATI Decorative Laminates believes all information contained herein to be correct. It is the responsibility of the fabricator/customer to completely test the adhesives and methods of fabrication to ensure that the results are satisfactory. The seller's only obligation will be to replace product on a one-to-one basis in the event it is covered under the above warranty. ATI is not responsible for any fabrication, ancillary, or labor costs involved with using its products. Neither the manufacturer nor the seller shall be liable for any additional damage or loss, directly or indirectly, arising as a result of using its products.


Slight imperfections and color variations can occur and are considered normal. Please inspect each product carefully before fabrication to ensure it meets your needs.

Contact ATI Laminates



Follow Us on Social



 Check ATILaminates.com for updated technical information and installation videos for Fusion products.



odyssey

Odyssey Wallcoverings
THE OBVIOUS CHOICE

1-800-663-6069 | www.odysseywallcoverings.com

051.506_08.18